

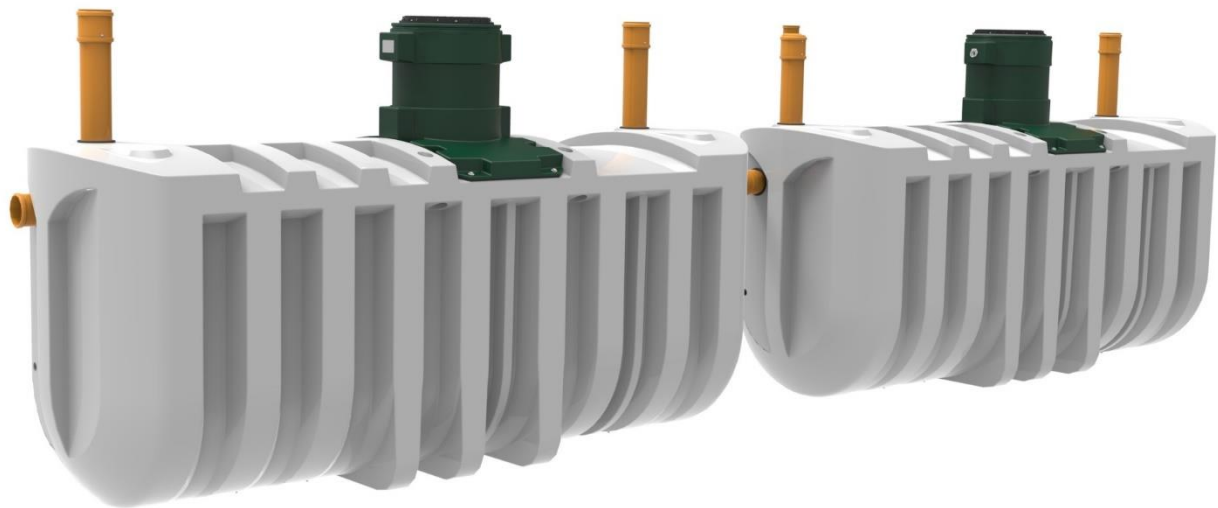
# Harlequin® HydroClear

## SEWAGE TREATMENT PLANT

## HydroClear HC30 Wastewater Treatment Plant

HydroClear represents significant progress for the domestic wastewater treatment industry.

Contemporary design engineering and analysis software and state-of-the-art manufacturing facilities combine to create this unique product which dominates the sewage treatment plant market with class-leading pollutant removal level of 97%.



### Standard Features:

- ◆ Tank bodies moulded in one piece from durable medium density polyethylene material
- ◆ 160mm inlet and outlet connections
- ◆ Integrated lifting eyes for ease of handling and installation
- ◆ Fully secured 450mm pedestrian duty manhole covers comply with statutory regulations
- ◆ Adjustable turrets allowing for shallower invert levels
- ◆ Above ground air blower housing delivers more reliable and efficient operation, and allows easy access for maintenance
- ◆ Air blower function alarm
- ◆ Easy access to the bubble diffuser within the aeration tank
- ◆ Virtually silent operation
- ◆ Cost effective installation
- ◆ 24 month service period reduces operating costs
- ◆ HydroClear owners can determine their own de-sludge intervals giving potential cost savings
- ◆ Mechanically reliable with no moving parts or electrics within the tank
- ◆ Certified to EN12566-3

# Harlequin® HydroClear

## SEWAGE TREATMENT PLANT

## HydroClear HC30 Wastewater Treatment Plant

### Optional Equipment:

- ◆ Pumped outlet
- ◆ 300mm manhole riser(s). Max 3 risers on a gravity tank or 2 risers on a pumped outlet<sup>+</sup>  
<sup>+</sup> *Maximum invert level 2m. Use 1200mm concrete rings to achieve inverts below max. number of risers.*

### Technical Data:

Treatment Efficiency		Efficiency	Effluent	
		COD	91.2%	59 mg/l
		BOD <sub>5</sub>	96.6%	11 mg/l
		NH <sub>4</sub> -N	85.8%	4.5 mg/l
	SS	94.7%	19 mg/l	
Nominal hydraulic daily load	6,000Litres / day			
Nominal organic daily load	1,800g BODs / day			
Inhabitants served	21 - 30			
Desludging interval	6 months *			
Electrical consumption	3.6 kWh/d			
Power requirements	230V 149W 1.5A (start-up current)			
Volumes (at operational height)	Primary settlement – 6600 Litres Aeration – 3600 Litres Final settlement – 2990 Litres			
Overall dimensions	Primary settlement – L 4500mm W 1400mm H 2560mm Aeration / Final - L 4500mm W 1400mm H 2560mm			
Standard inlet depth	1100 mm			
Standard outlet depth	1150 mm			
Depth from invert to base	1460 mm			
Depth from base to ground	2560 mm			
Pipe diameter	160 mm			
Net Weights	Primary - 450kg Aeration / Final - 630kg			

\* *de-sludge interval up to 6 months depending on the number of inhabitants*

#### Issued By:

Harlequin Manufacturing Limited  
 21 Clarehill Road, Moira, Co. Armagh, N.Ireland, BT67 OPB  
 T: +44 (0)28 9261 1077  
 W: [www.harlequin-mfg.com](http://www.harlequin-mfg.com)  
 E: [info@harlequin-mfg.com](mailto:info@harlequin-mfg.com)