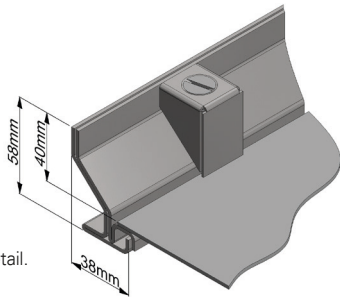
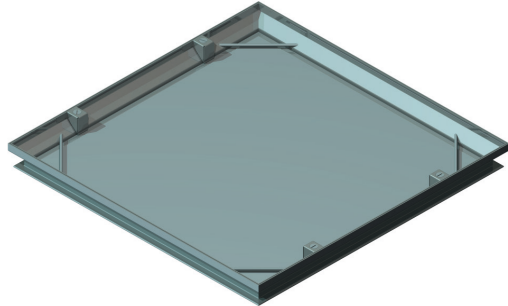


PS3100
Single Recessed Tray Type Cover & Frame
FACTA Class AAA



Section through detail.
 Unsealed

Single recessed tray type cover and frame. Designed to be infilled with C25 concrete to achieve full loading. Recessed lids are designed for either full concrete infill or concrete infill with up to a 15 mm tile floor finish. Units can be supplied either 'Unsealed, non locking' or 'Double sealed & locked'. All products are manufactured under an ISO 9001 Quality system. This product is hot dip galvanised to BS EN ISO 1461 as standard.

Options:

- Stainless Steel Grade 304 Edging
- Brass Edging
- Locking - Slotted Head
- Locking - Allen Head
- Locking - Hex Pin

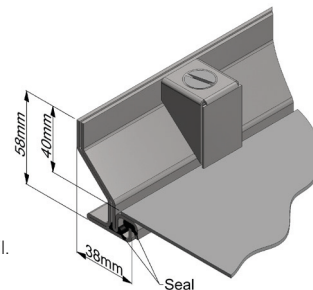
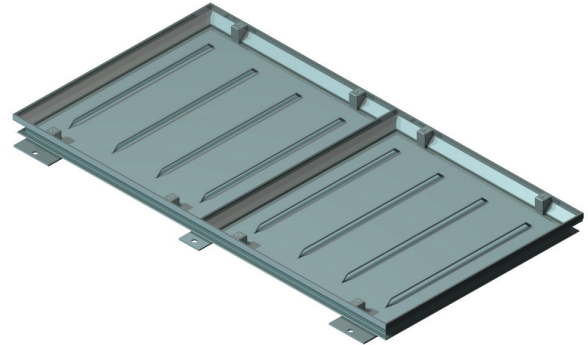
Standard Sizes

Clear Opening (mm)	Suffix	Clear Opening (mm)	Suffix
300 x 300	A	750 x 750	F
450 x 450	B	900 x 600	G
600 x 450	C	900 x 750	H
600 x 600	D	900 x 900	J
750 x 600	E	1000 x 1000	K

Non-standard sizes available

Product codes: PS3100 - Unsealed, Non-locking
 PSD3104 - Double Sealed, locked

PS3300
Twin Recessed Tray Type Cover & Frame
FACTA Class AAA



Section through detail.
 Double Sealed

Twin recessed tray type cover and frame. Designed to be infilled with C25 concrete to achieve full loading. Recessed lids are designed for either full concrete infill or concrete infill with up to a 15 mm tile floor finish. PS3300 units are fitted with a centre removable beam. All products are manufactured under an ISO 9001 Quality system. This product is hot dip galvanised to BS EN ISO 1461 as standard.

Options:

- Stainless Steel Grade 304 Edging
- Brass Edging
- Locking - Slotted Head
- Locking - Allen Head
- Locking - Hex Pin

Standard Sizes

Clear Opening (mm)	Suffix	Clear Opening (mm)	Suffix
1200 x 600	L	1500 x 900	R
1200 x 750	M	1800 x 600	T
1200 x 900	N	1800 x 750	V
1500 x 600	P	1800 x 900	W
1500 x 750	Q		

Non-standard sizes available

Product codes: PS3300 - Unsealed, Non-locking
 PSD3304 - Double Sealed, locked