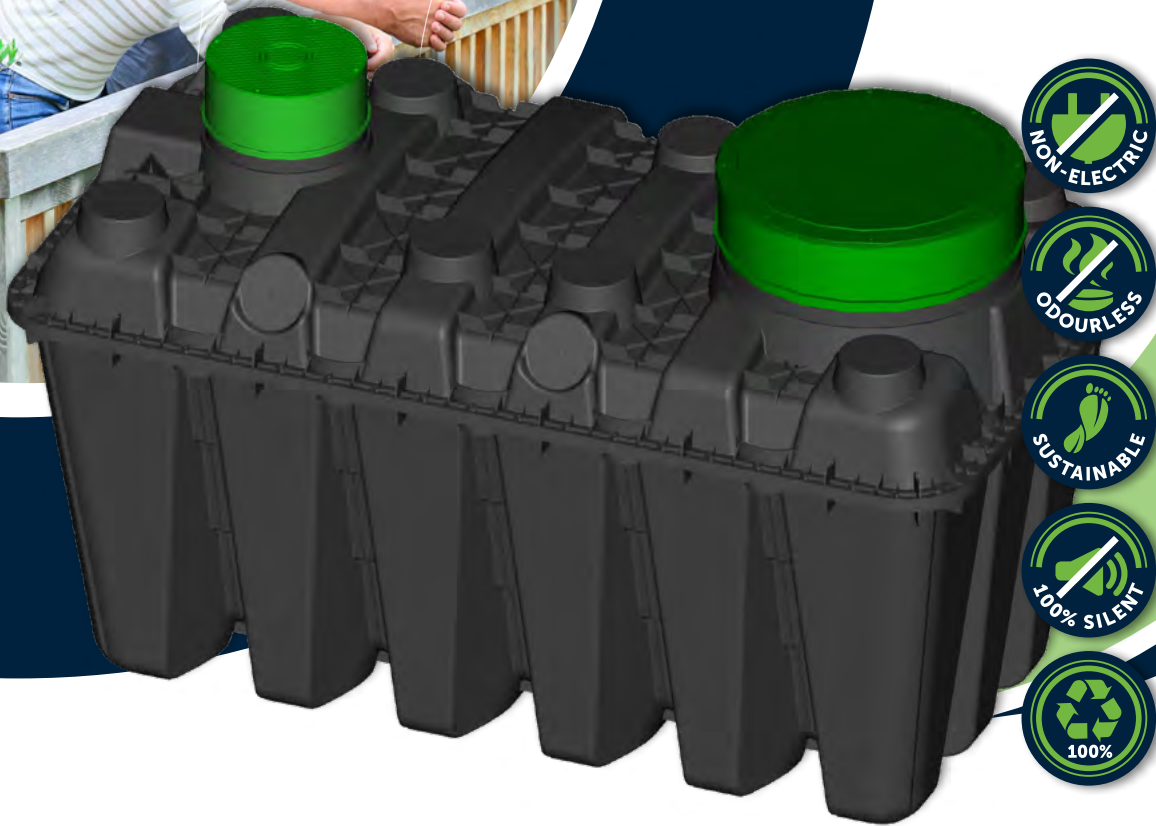


BEASY-2000

DOMESTIC WASTEWATER SOLUTION

Ultra-Compact & All-in-One System



BIOROCK

engineered for tomorrow



THE FUTURE OF WASTEWATER TREATMENT

BIOROCK is home to an internationally-acclaimed team of wastewater specialists who share the goal of providing innovative, sustainable, and eco-friendly water treatment systems.

Our level of expertise and attention-to-detail guarantees only the best, most reliable products, providing the market with the ultimate non-electrical wastewater treatment technologies.

ADVANTAGES AND BENEFITS OF THE BEASY-2000

- BEASY-2000 ■
- Electrical Plants ■
- Organic Media Plants ■

THE BEASY-2000 SOLUTION

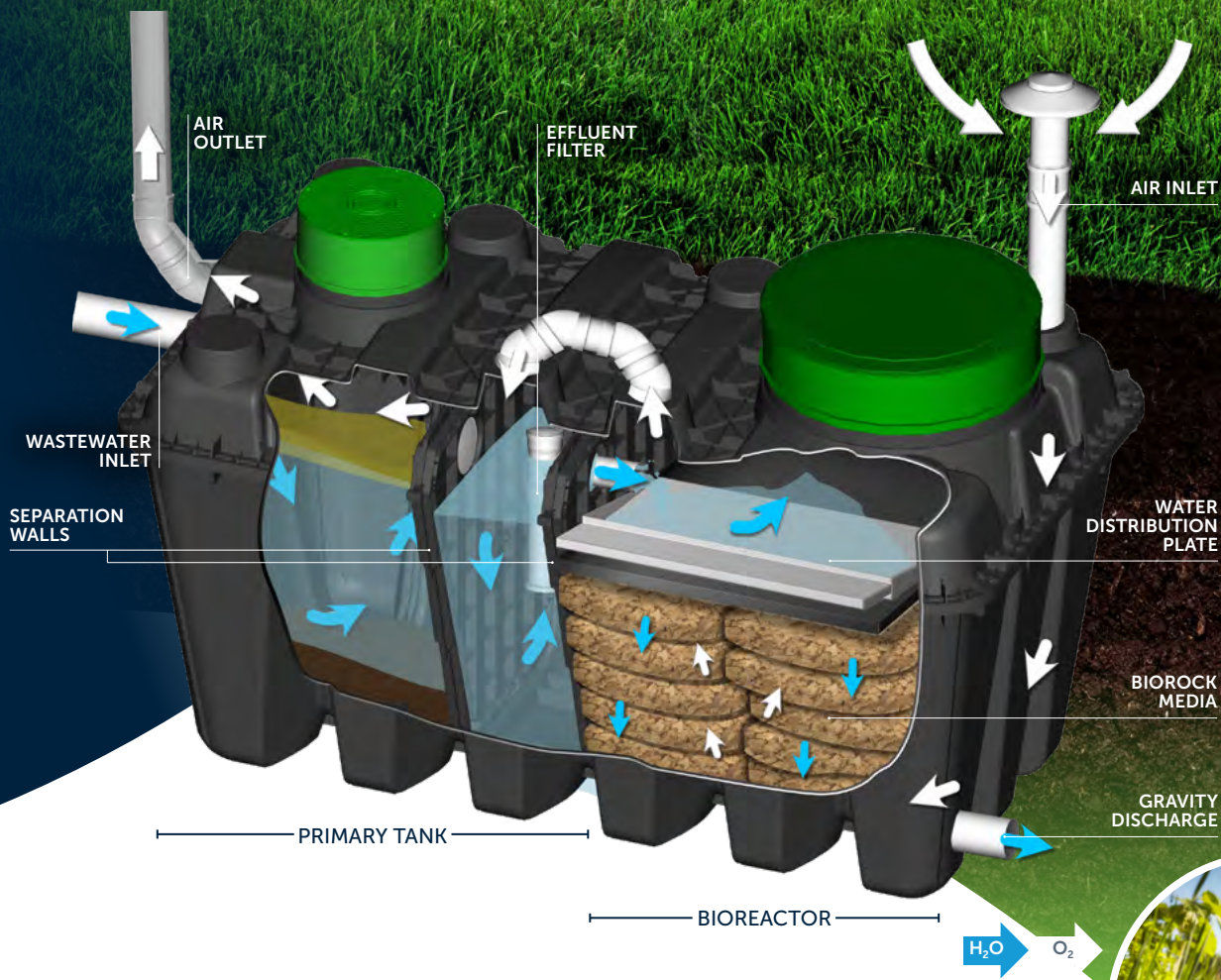
Our **BEASY-2000 Solution** offers a simple yet effective process that requires no electricity, has no moving parts, and needs minimal annual maintenance.

This **ultra-compact wastewater treatment plant** can be used in areas where there is no access to electricity or where electricity supply is intermittent ; perfect for garden houses or chalets!

It combines everything you need to treat your wastewater, while remaining **discreet and odor-free**.

For your convenience, the system is delivered complete and pre-assembled to make installation even easier.

| | | | |
|-------------------------------------|---|---|---|
| High Media Lifespan | ✓ | ✗ | ✗ |
| Low Operational Costs | ✓ | ✗ | ✗ |
| Minimal Annual Maintenance | ✓ | ✗ | ✗ |
| Ultra-Compact & Discreet | ✓ | ✗ | ✗ |
| Non Electric | ✓ | ✗ | ✓ |
| Long Septic Tank Pump-Out Intervals | ✓ | ✗ | ✓ |
| Odourless | ✓ | ✗ | ✓ |
| Silent | ✓ | ✗ | ✓ |
| Long Absence Periods | ✓ | ✗ | ✓ |



HOW DOES IT WORK?

Step 1: Primary Tank

The PRIMARY TANK clarifies the raw sewage of fats, oils, greases and organic solids. The sewage water then passes through an effluent filter, before discharging into the BIOROCK reactor.

Step 2: BIOREACTOR Process

Our BIOREACTOR further purifies the pretreated wastewater using a biological process. To naturally treat the wastewater, our systems use our unique BIOROCK Media, an exclusive and very efficient carrier material for bacteria.

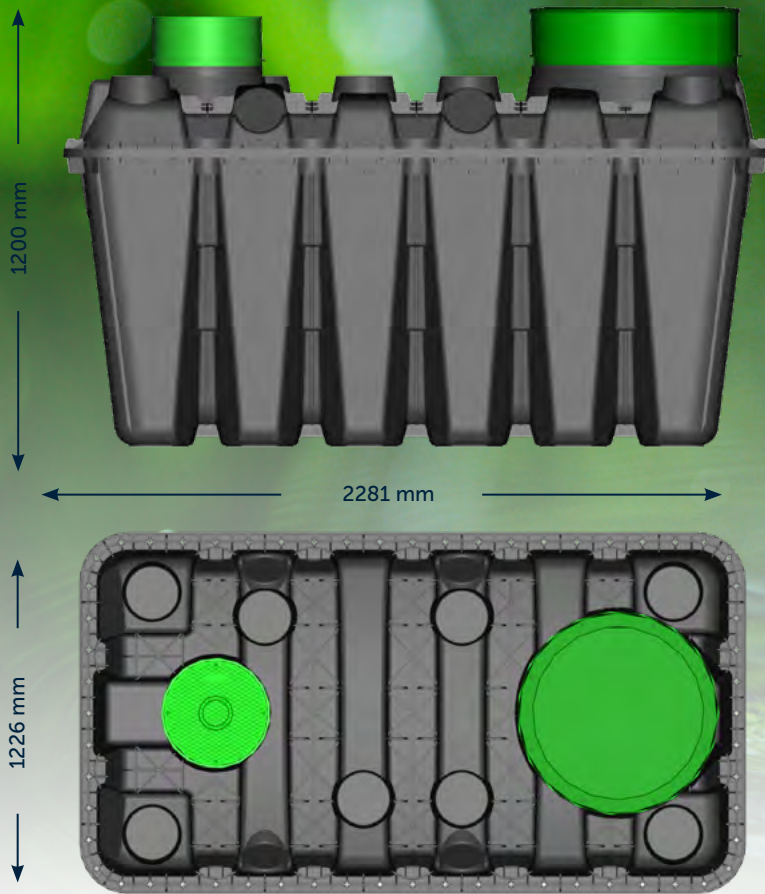
Step 3: Discharge

Depending on the ground type, effluent will be discharged by gravity, or by a pump.

THE UNIQUE BIOROCK MEDIA

Our **exclusive media** is degradation-resistant, stable, and sustainable - keeping the purification system working effectively over the long-term. You will exclusively find it in BIOROCK systems.





SAVE MONEY WITH BEASY-2000

One of the main benefits of having a **BEASY** sewage treatment plant is that it's a long-term, sustainable, and economic investment. Our system requires minimal maintenance, does not need electricity, and has a long lifespan.

You will constantly save on electricity and maintenance.

Do you need a larger non-electric power plant? We have a solution for any project, no matter the size! Contact us for more information.

WHY CHOOSE BEASY-2000?

- Compact & Discreet
- No electricity required
- Save on electricity bills
- Quiet and & Odorless
- Quick and easy to install
- Eco-friendly technology

BEASY-2000 SPECIFICATIONS

| | |
|----------------------------|----------------|
| TANK VOLUME | 2000 l |
| WEIGHT (EMPTY) | 170 kg |
| CAPACITY IN P.E. | Up to 4 P.E.* |
| DAILY VOLUME OF WASTEWATER | 300 liters/day |

**2pe for standard domestic use and up to 4pe for camping, glamping or similar use.*



BIOROCK
engineered for tomorrow

BEASY-EN-08-2021

Call us today for a **FREE** project consultation
or visit
www.biorock.com



CE BIOROCK units are approved and tested by many International Standards.

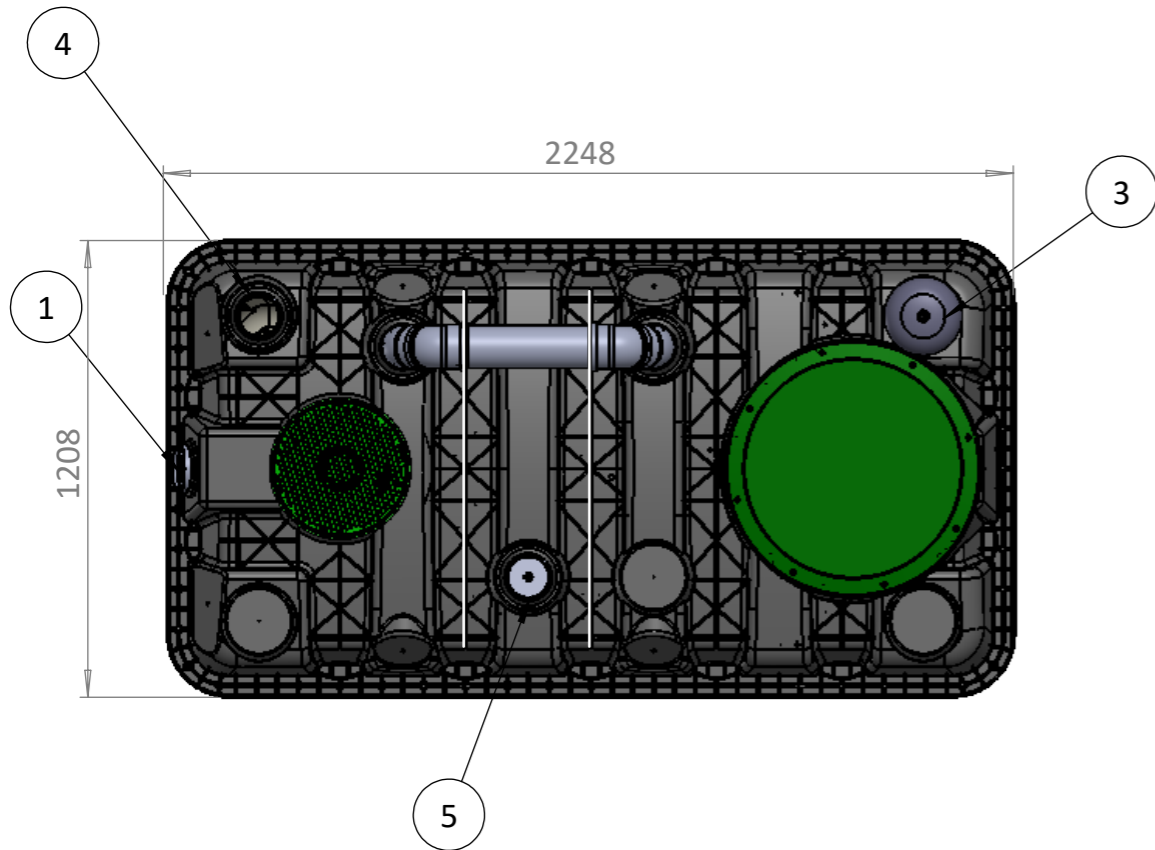
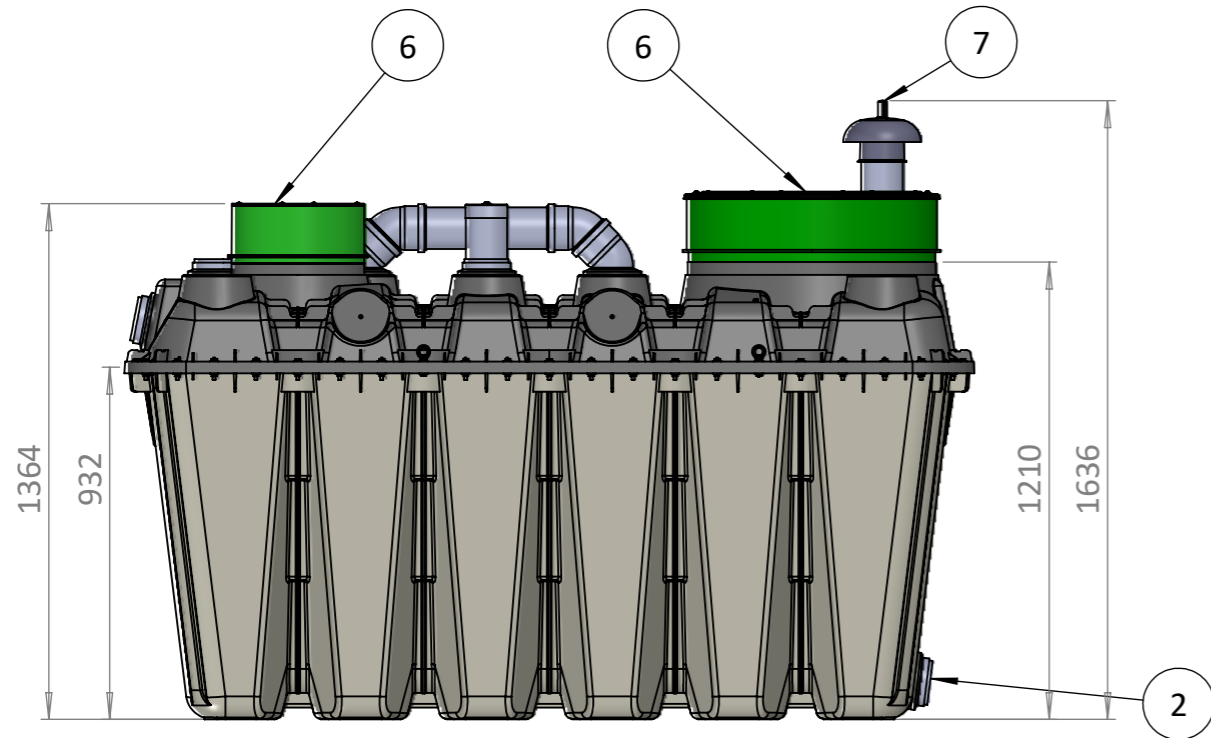


25 Year warranty on tanks
5 Year warranty on media

**subject to conditions*

BEASY-2000

TREATMENT CAPACITY 2 PE



TOLERANCE : 3%

| | |
|---|----------------|
| 1 | WATER INLET |
| 2 | WATER OUTLET |
| 3 | AIR INLET |
| 4 | AIR OUTLET |
| 5 | PREFILTER |
| 6 | COVERS |
| 7 | OVERFLOW ALARM |

| CARACTERISTICS | VALUE | UNIT |
|-------------------------------|-------|----------------|
| CAPACITY IN PEOPLE EQUIVALENT | 2 | PE |
| DAILY HYDRAULIC LOAD | 300 | L/DAY |
| HYDRAULIC LOAD PER PE | 150 | L/DAY/PE |
| ORGANIC LOAD PER PE | 60 | GR.DBO5/PE/DAY |
| DAILY ORGANIC LOAD | 0.12 | KG DBO5/DAY |
| PRIMARY TREATMENT | | |
| VOLUME AT WATER LEVEL | 725 | L |
| VOLUME - COMPARTMENT 1 | 475 | L |
| VOLUME - COMPARTMENT 2 | 250 | L |
| PREFILTER | 1 | |
| SECONDARY TREATMENT | | |
| MEDIA HEIGHT | 770 | MM |
| SECONDARY TREATMENT AREA | 0.9 | M ² |
| SPECIFICATION | | |
| OVERALL LENGTH | 2248 | MM |
| OVERALL WIDTH | 1208 | MM |
| OVERALL HEIGHT | 1364 | MM |
| OVERALL HEIGHT + VENTILATION | 1636 | MM |
| TOTAL WEIGHT (WITHOUT WATER) | 170 | KG |
| PIPE DIAMETER | 110 | MM |
| COVER DIAMETER (PRIMARY) | 300 | MM |
| COVER DIAMETER (SECONDARY) | 600 | MM |

Création

NOM: AQ

DATE: 03/02/2022

Vérification

NOM:

DATE:

BIOROCK
BEASY-2000

REVISION

DESCRIPTION

NOM
DATE

Rev:

Echelle:
Scale:

1:20

Page:
Sheet:

2/2

A3

Declaration of Performances 2022-001

BEASY-2000¹

1- Unique identification code of the product-type:

Small wastewater treatment systems for up to 50 PT — Part 3: Packaged and/or site assembled domestic wastewater treatment plants

2- Intended uses(s):

Treatment of domestic wastewater for a population up to 50 PTE

3- Manufacturer:

BIOROCK, 4-5 ZAE Le Triangle Vert L-5691 ELLANGE (Luxemburg)

4- Harmonized standard: EN 12566-3

Notified body: CSTB n°0679

5- Declared performances: See table below

| Essential Characteristics | Performances | | | |
|--|---|--|-----------|--|
| Treatment efficiency | Reference unit | TREATMENT EFFICIENCY TEST | | |
| | | Loads and ratios measured during the nominal sequences (based on 20 results) | | |
| | Reference of the tested product-type: BEASY-2000 | Mean efficiency ratios obtained: | | |
| | | BOD₅ | 96,40% | |
| | | COD | 90,20% | |
| | Tradename ¹ : BEASY-2000 | SS | 98% | |
| | | Effluent mean concentrations measured: | | |
| | Nominal hydraulic daily flow <i>Q_N</i> : 0,3 m³/d | BOD₅ | 10 mg/l | |
| | | COD | 71,2 mg/l | |
| | | SS | 7,3 mg/l | |
| Nominal organic daily load (<i>BOD₅</i>): 0,12 kg/d | Mean electrical power consumption measured: 0 kWh/d | | | |
| | Number of desludging carried out: 0 | | | |
| Tank specifications | Watertightness | Pass | | |
| | Material | PP | | |
| | Structural behavior | Pass | | |
| | Maximum backfill height above the tank | | 0,15m | |
| | Soil conditions | | WET 0,86m | |

¹ The tradename is provided here for information purposes only. In accordance with Article 11-3 of the Construction Products Regulation (EU) No 305/2011, the manufacturer is responsible to adequately take into account any changes in the product-type for series production with the tradename mentioned.



The performance of the product identified above is in conformity with the set of declared performance(s). This declaration of performance is issued, in accordance with Regulation (EU) No 305/2011, under the sole responsibility of the manufacturer identified above.

Signed for and on behalf of the manufacturer by:

Gerrit SMIT