



Backwater valves \varnothing 50

Non return-valves

protection
reliability
safety

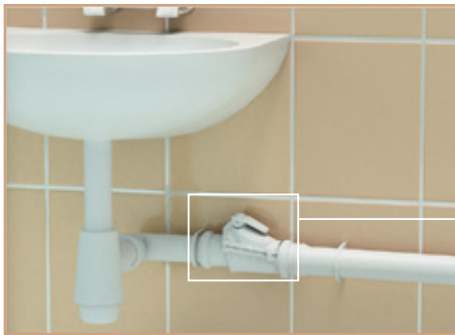


www.BackWaterValve.eu

protection
reliability
safety

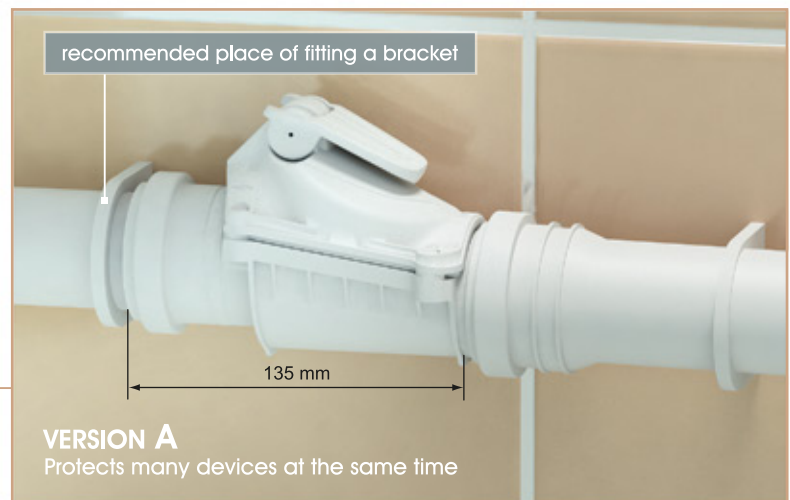
Anti-flood devices protect interiors from flooding caused by sewage back-flow. Karmat non-return valve \varnothing 50 is an ideal solution where it is impossible to install a non-return valve to protect the whole building e.g. in an apartment block.

Non-return valve ZB 50 VERSION A



The non-return valve \varnothing 50 in version A is fitted in the horizontal course of \varnothing 50 sewage pipework attached to the wall by means of brackets.

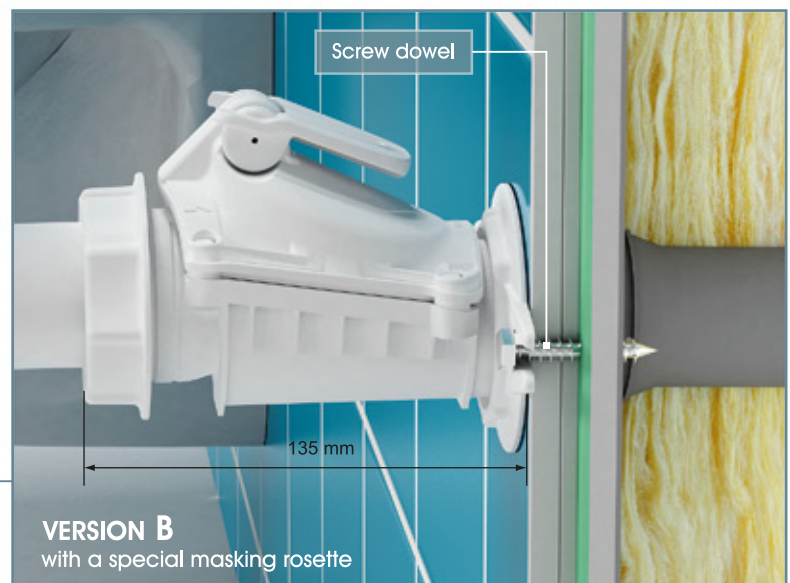
A non-return valve installed in such a way can protect several facilities at the same time if they are connected to the same sewage system such as a bath or shower base traps.



Non-return valve ZB 50 VERSION B



The non-return valve in version B is connected to the \varnothing 50 pipe socket of an existing pipe fitting in the wall. A special aesthetic masking rosette allows the valve to be mounted to the wall by means of two screws. This protects the system from self-detachment in cases of increased pressure in the system caused by sewage backflow. To the device mounted in such way, the trap (e.g. a washbasin) is to be connected by means of a special connector with a screw cap.



Maximum operating temperature: 95°C

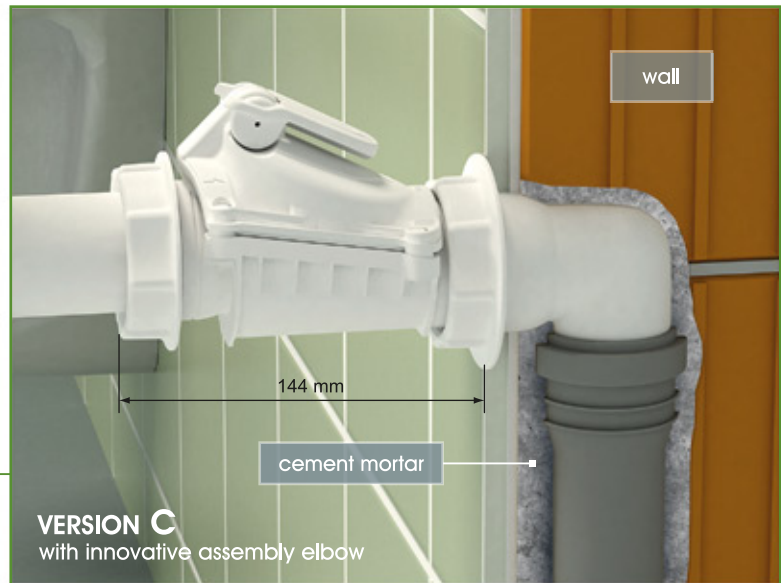
Maximum operating pressure: 0,5 bar

The \varnothing 50 anti-flood valve can be used in all sewage-related systems such as washbasins, sinks, shower bases and dishwashers. It is manufactured in different versions making installation possible into any type of system. The \varnothing 50 anti-flood valves are aesthetically designed to be fitted inside a house or a flat.

protection
reliability
safety

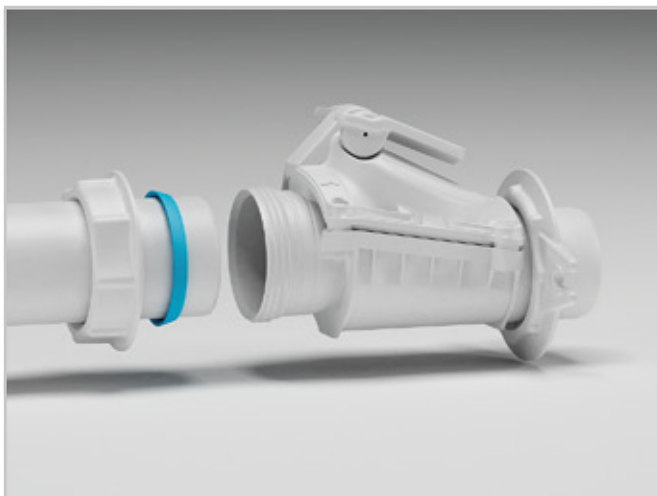
Non-return valve ZB 50 VERSION C

Non-return valve \varnothing 50 in version C is designed for installation in new or altered sewage systems. It is mounted to the wall by means of a special \varnothing 50 elbow which is to be connected to the valve with a special nut, that also takes the role of a masking rosette at the same time. The elbow enables to orient the outflow, at any angle, to the left or to the right and protects the system from self-detachment in the case of increased pressure in the sewage system caused by sewage backflow.



Method of connecting traps to the valves in version B and C

Trap is easily and tightly connected to the valve by means of a nut and conic gasket.



Proper mounting of the non-return valve in version C

When mounting the elbow to the wall, it is necessary to leave outside 11 to 13,5 mm of screw-thread. Fixing the valve to it, is easy due to a nut and special gasket.

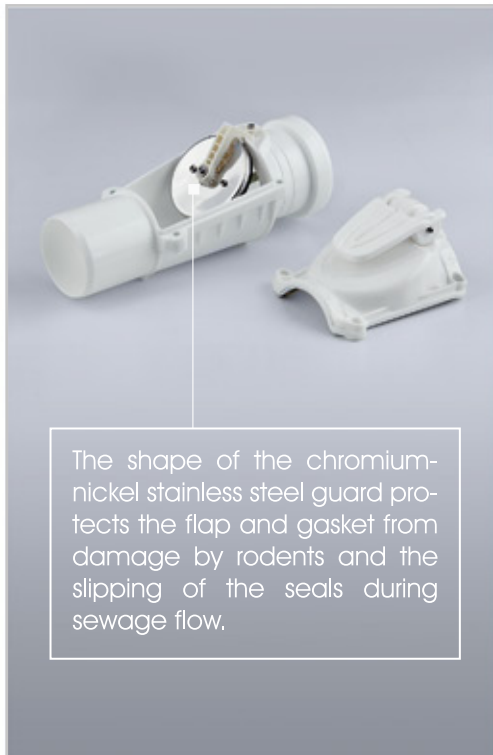


Non-return valves \varnothing 50 meet requirements of the standard EN 13564-1 and they are marked with the CE mark. The design is registered in the Patent Office.

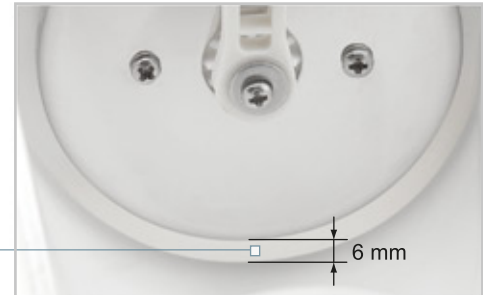
protection
reliability
safety

- flap cover, and all fasteners (screws, nuts, washers) are made of chromium-nickel stainless steel type 0H18N9
- the non-return valve is made of ecological polypropylene, a non-toxic material, resistant to corrosion and chemical agents
- to produce gaskets the highest quality of flexible materials with increased resistance to weathering and aging, have been used

Efficient protection against rodents



Compatible with the standard, the safe distance of the flap from the bottom of the casing ensures proper operation and allows for the self-cleaning of the valves.



Comfortable manual closure

All $\varnothing 50$ non-return valves have a convenient maintenance lever. A small move of the lever blocks the flow quickly and efficiently. This allows to protect premises from unpleasant odours in case of a household sewage system being unused for a longer period of time.



Non-return valve $\varnothing 50$ version C

