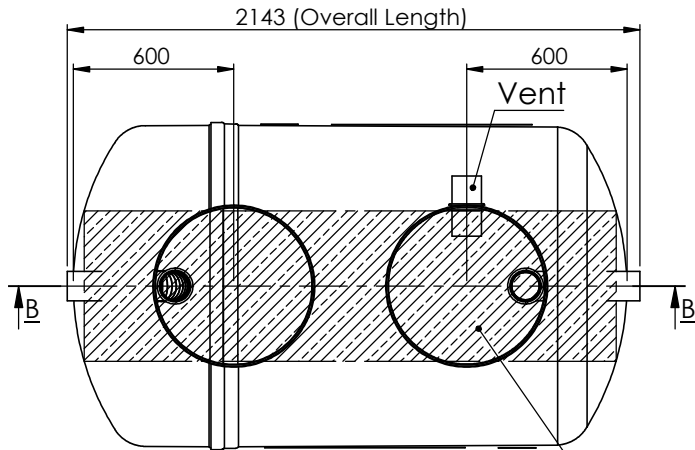


TOTAL WORKING VOLUME = 1740 Litres



OIL / GREASE SEPARATION AREA = 1.8m²

Product	Size
NSG	04

Inlet Invert	
ww	Invert
05	0.5m Invert
10	1.0m Invert
15	1.5m Invert

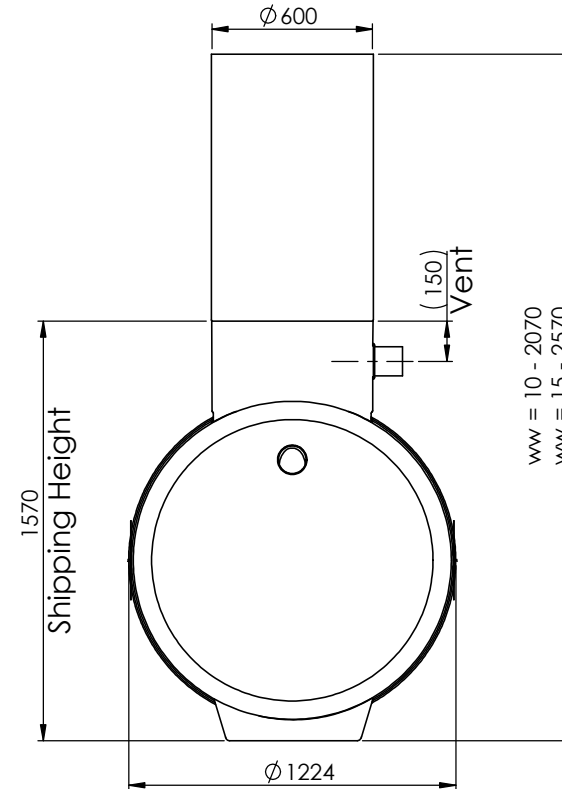
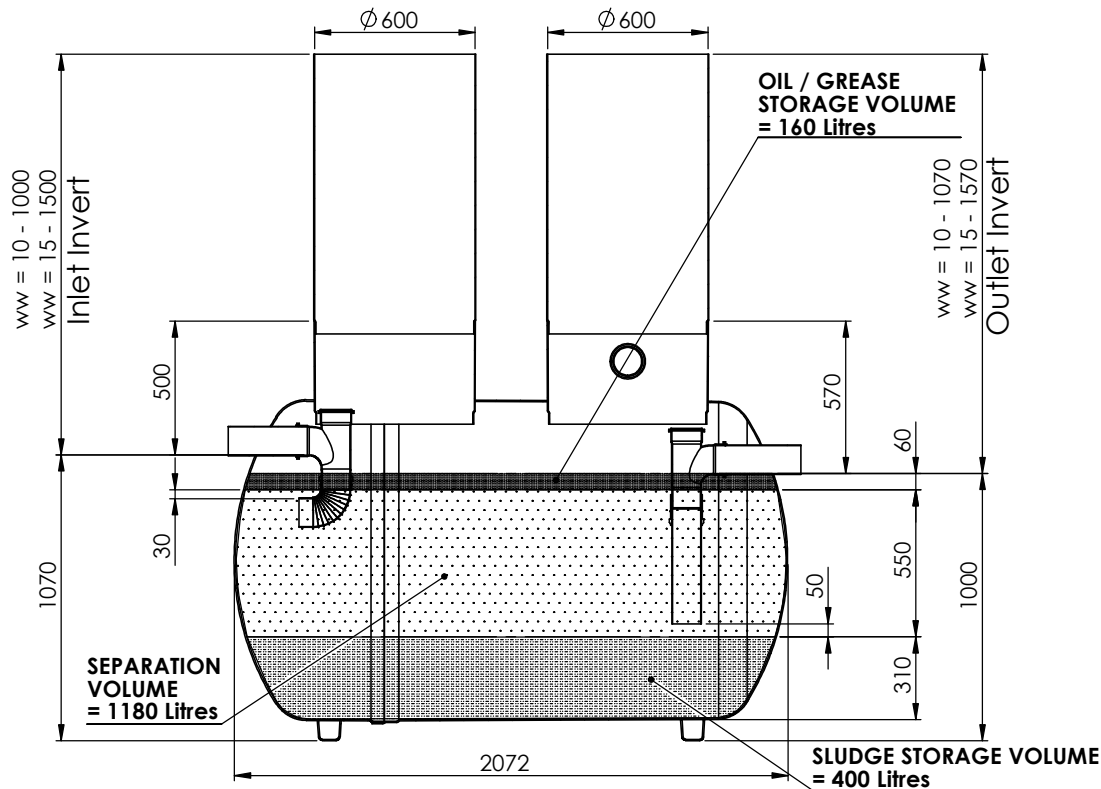
Pipework Orientation	
x	Orientation
A	Refer To TDS0033
B	
C	
D	
E	
F	
G	
H	
K	

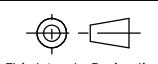
Notes:-

1. Inlet Invert To Be Confirmed By Customer.
2. Pipework Orientation (A, B, C etc.) Dependent On Site Pipework Layout. To Be Specified At Order Stage.
3. Standard Minimum Pipework Size Is Ø110mm.
4. If Required, Extensions Will Be Supplied Loose To Be Fitted On-Site Using Silicon Sealant (Supplied By Others).
5. Tanks Can Be Installed In Either Granular Or Concrete Backfill - Please See Manual For Details.

Standard Connections Sizes	
y	Connection (Ø)
A	Ø110
C	Ø160

z	Branding
K	Klargester



Please Check with Environmental Treatment Systems Limited For The Latest Issue Of This Drawing				Material : Various	Tolerance (unless stated) :	Drawing : DS1269P	Page 1 of 1
Issue	Date	Drawn by	Approved by	Finish :	Thickness : n/a		
03	11/02/16	L.Steward		Weight : 96.61 Kg	Surface Area : m ²	Ø1.2m NSG04 Grease Separator - 2000L	
02	04/09/15	L.Steward		Modelled By : Name			
All Dimensions In mm			Scale: Do Not Scale	 Third Angle Projection		Kingspan Environmental reserve the right to alter the details of this drawing without prior notice. This drawing is copyright and may not be reproduced or used without the written permission of Kingspan Environmental	
T:\Drawing Data\02 - Sales Drawings\DS\DS - 12\DS1269P							