

Total Working Volume: 9560L

Product	Size
NSG	24

Inlet Invert	
ww	Invert
05	0.5m Invert
10	1.0m Invert
15	1.5m Invert

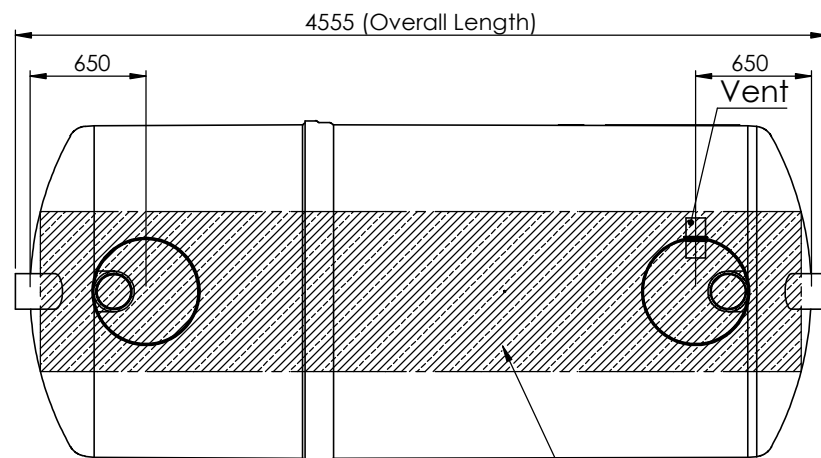
Pipework Orientation	
x	Orientation
A	Refer To TDS0033
B	
C	
D	
E	
F	
G	
H	
K	

Standard Connection size	
y	Connection (Ø)
D	Ø200

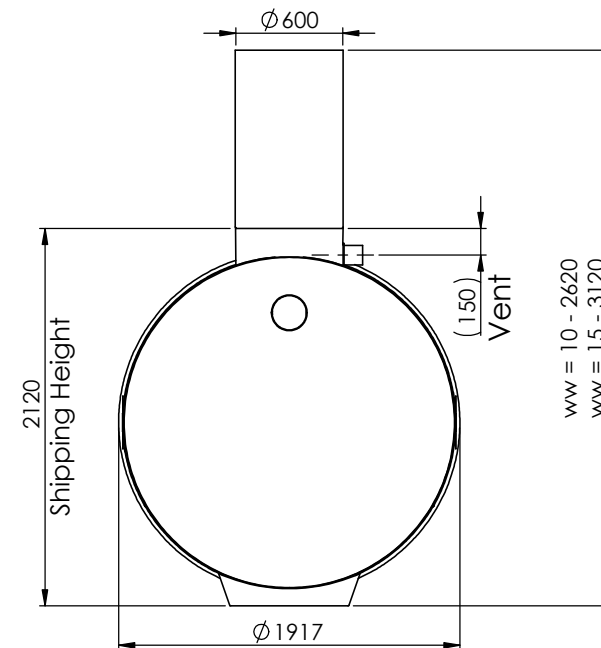
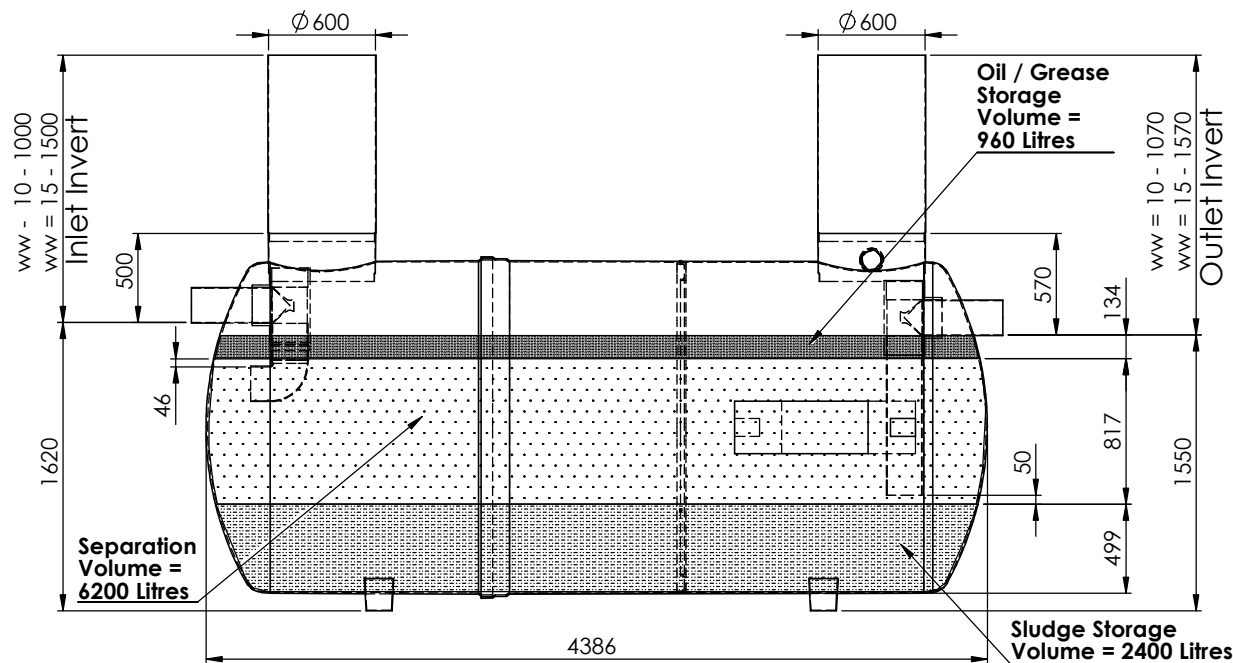
z	Branding
K	Klargester


Notes:-

1. Inlet Invert To Be Confirmed By Customer.
2. Pipework Orientation (A, B, C etc.)
Dependant On Site Pipework Layout. To Be Specified At Order Stage.
3. Standard Minimum Pipework Size Is Ø200mm.
4. If Required, Extensions Will Be Supplied Loose To Be Fitted On-Site Using Silicon Sealant (Supplied By Others).
5. This Unit Can Be Installed In Either Granular Or Concrete Backfill - Please See Manual For Details.



Oil / Grease Separation Area = 6.42m²



Please Check with Environmental Treatment Systems Limited For The Latest Issue Of This Drawing					Material : Various	Tolerance (unless stated) :	Drawing : DS1273P	Page 1 of 1
Issue	Date	Drawn by	Approved by	Description	Finish :	Thickness : n/a		
03	11/02/16	L.Steward		CC1294 - Overall Dimensions Added	Weight : 365.67 Kg	Surface Area : m²	Ø1.8 NSG24 Grease Separator - 11000L	
02	04/09/15	L.Steward		Product Code Updated	Modelled By : Name			
All Dimensions In mm			Scale: Do Not Scale		Kingspan Environmental reserve the right to alter the details of this drawing without prior notice. This drawing is copyright and may not be reproduced or used without the written permission of Kingspan Environmental			
T:\Drawing Data\02 - Sales Drawings\DS\DS - 12\DS1273P			Third Angle Projection					
							