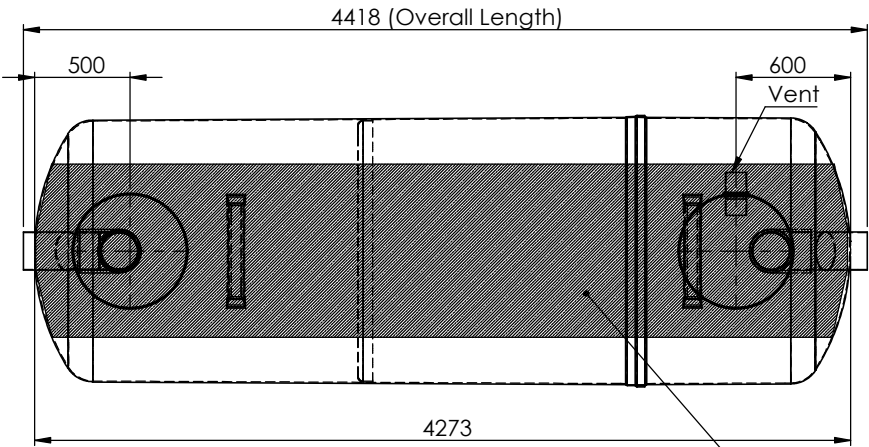
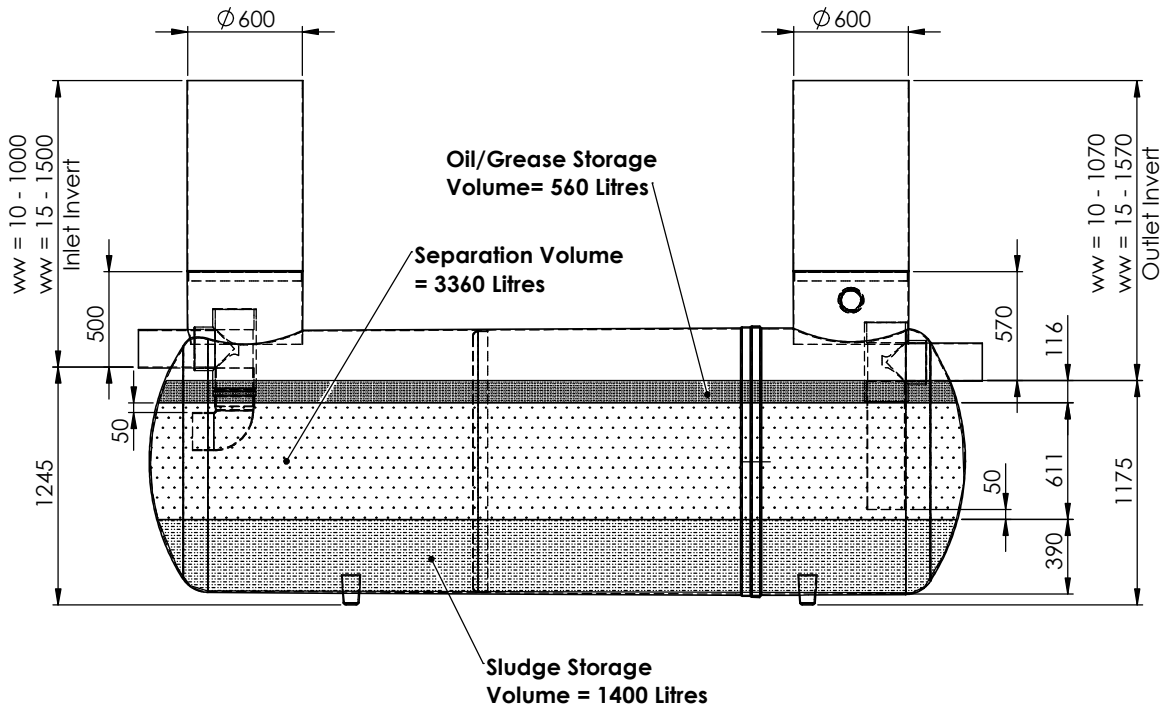


Total Working Volume = 5320L



Oil/Grease Separation Area = 5.05m²



Product	Size
NSG	14

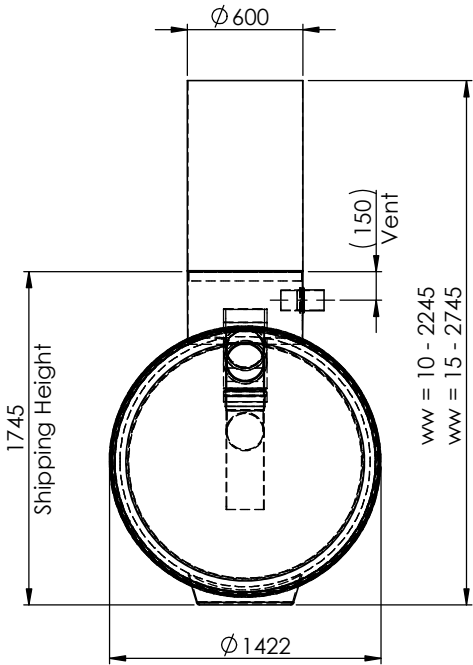
Inlet Invert	
ww	Inlet Invert
05	0.5m Invert
10	1.0m Invert
15	1.5m Invert

Pipework Orientation	
x	Orientation
A	Refer To TDS0033
B	
C	
D	
E	
F	
G	
H	
K	

- Notes:-
1. Inlet invert to be conformed by customer.
 2. Pipework orientation (A, B, C etc.) dependant on site pipework layout. To be specified at order stage.
 3. Standard minimum pipework size is Ø200mm.
 4. If required, extensions will be supplied loose to be fitted on-site using silicon sealant (supplied by others).
 5. This unit can be installed in either granular or concrete backfill - please see manual for details.

Standard Connections Size	
y	Connections (Ø)
D	Ø200

z	Branding
K	Klargester



Please Check with Kingspan Environmental For The Latest Issue Of This Drawing				
Issue	Date	Drawn by	Approved by	Description
01	17.05.17	WMD		CC1381 - Initial Issue

Material : Various
Finish :
Weight : 211.29 Kg
Modelled By : Name

Tolerance (unless stated) :
Thickness : n/a
Surface Area : m ²

Drawing : DS1327P
Page 1 of 1
Ø1.4 NSG14 Grease Separator - 6000L

All Dimensions In mm	Scale: Do Not Scale	Third Angle Projection
Y:\Drawing Data\02 - Sales Drawings\DS\DS - 13\DS1327P		

Kingspan Environmental reserve the right to alter the details of this drawing without prior notice. This drawing is copyright and may not be reproduced or used without the written permission of Kingspan Environmental

