

<http://drainstore.com/>



Pump Station Controller Alarm Type 14400

Installation, Operation & Maintenance

Pump Station Controller Alarm Type 14400

Contents

➤ General Description	3
➤ General Operation	3
➤ Technical Information	3
➤ <i>Specifications</i>	3
➤ <i>Beacon Output</i>	3
➤ Accessories	5
➤ <i>Beacon</i>	5
➤ Maintenance and Repair	5

Universal Tank Alarm Type 14400

Installation, Operation and Maintenance

➤ **General Description**

The unit is designed to alert the user of a high level via a float switch. This will sound an alarm and flash a beacon when high level is reached.

➤ **General Operation**

The unit continuously monitors if a high level has occurred via a float switch.

The probe is normally positioned above the liquid and the LED on the unit will be green. When there is a sufficient build-up of liquid, a sounder inside the unit sounds intermittently and the attached beacon (optional) flashes. The LED on the unit turns red. To silence the sounder and stop the beacon flashing, press the button on the unit. The LED will remain red until the probe detects low level once again.

➤ **Technical Information**

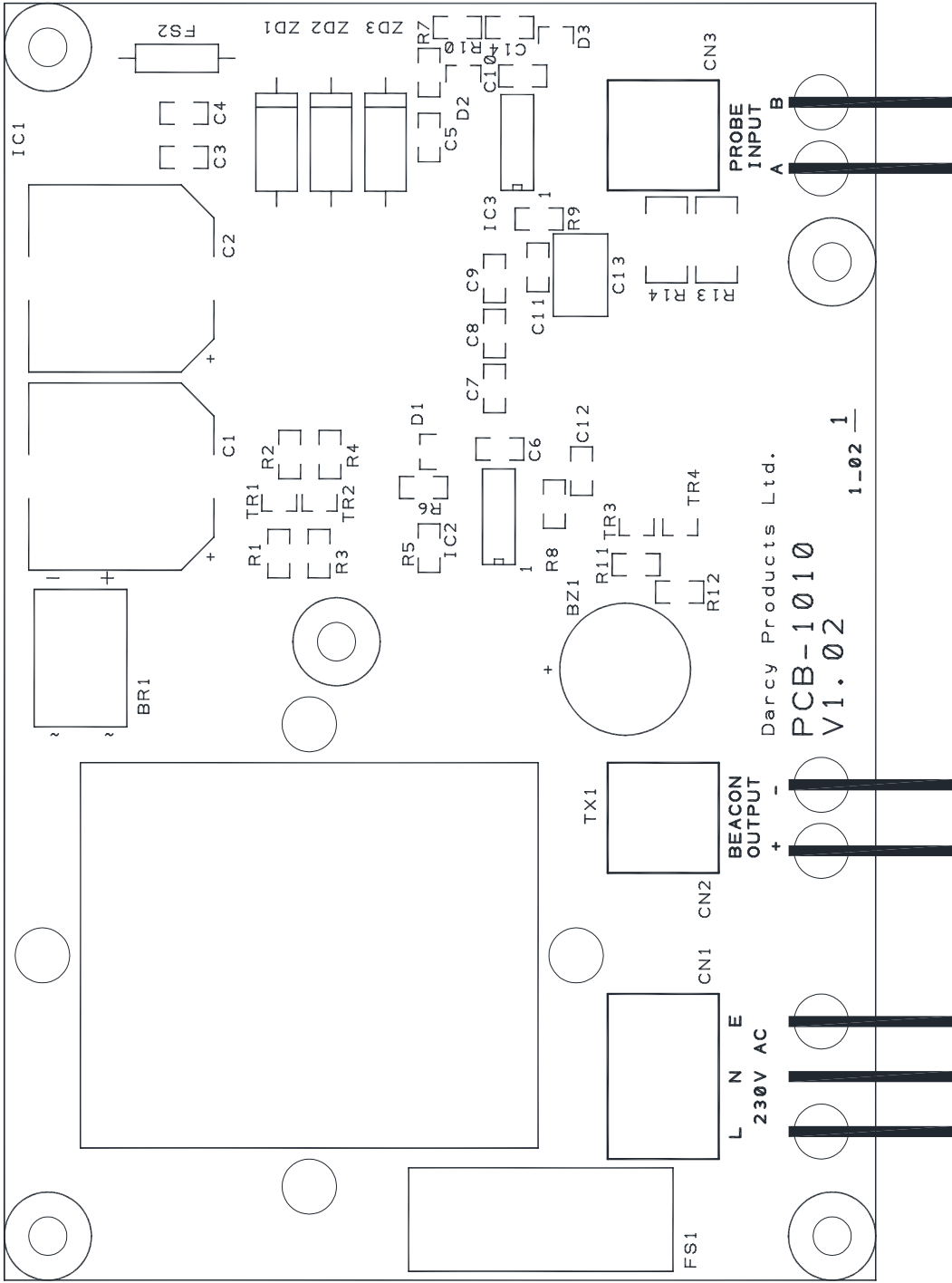
➤ **Specifications**

Enclosure	180mm(W) 130mm(H) 60.5mm(D) IP66/67 ABS
Supply Voltage	230VAC $\pm 10\%$, 50/60Hz
Power Consumption	No alarm: 2.5W Alarm: 4.8W
Fusing	FS1 T 250mA H 250V 1500A breaking capacity FS2 Littelfuse 0242.050UAT1 50mA 250V 4000A breaking capacity
Max probe cable length	200m
Beacon Output (CN2)	11.2V DC, 100mA maximum

Table 1 - Specifications

➤ **Beacon Output**

This output is activated when the probe detects a high level and is deactivated again when the liquid level drops below the float or by pressing the button on the unit.



POWER INPUT
 Brown = Live
 Blue = Neutral
 Green/Yellow = Earth

BEACON OUTPUT
 + = Red or Brown
 - = Black or Blue

BEACON OUTPUT
 + = Red or Brown
 - = Black or Blue

PROBE INPUT
 A = Blue
 B = Black

PROBE INPUT
 A = Blue
 B = Black

➤ Accessories

➤ *Beacon*

A suitable 12V xenon beacon is detailed in Table 2. It can be ordered from Drainstore on 01773 767611 as order code PP/GCT-4056.

Manufacturer	Klaxon
Manufacturer Part No.	45-713121
Voltage	12V
Current	60mA (average)
Colour	Amber
IP Rating	IP65

Table 2 – Beacon Specifications

➤ Maintenance and Repair

For all repairs, contact Drainstore on 01773 767611.