



Wastewater Treatment Solutions

ONE 2 CLEAN, KLARO & SEPTIC TANKS



WASTEWATER TREATMENT SYSTEMS

ONE 2 CLEAN

KLARO

SEPTIC TANKS

UK VERSION

Welcome to Graf UK

By Matt Rolph, Managing Director, Graf UK



World's largest injection moulding machine

For more than 50 years, the GRAF brand has represented high-quality plastic products. Our Carat wastewater tanks represent the state of the art. Our long-standing partner KLARO, which joined our group of companies in 2014, has grown over the last 10 years to become the European market leader in small SBR treatment systems with airlift technology. Our small wastewater treatment systems are already being used by 240,000 satisfied customers. When you buy a GRAF wastewater treatment system, you benefit from the experience gained from more than 300,000 satisfied wastewater customers and the quality of two established brands in local wastewater disposal.

Quality comes first

GRAF uses state-of-the-art production facilities. This is the only way to guarantee superlative quality at attractive prices. A high standard of quality in production is an essential foundation for unique products. End-to-end quality assurance and a high level of automation guarantee maximum reliability in production. GRAF broke into new ground by using injection embossing to make the Carat wastewater tank. To manufacture this tank, GRAF commissioned the development and construction of the world's largest injection moulding machine.



Blow moulding



Rotational moulding

How to choose a Wastewater Treatment system

Wastewater solutions for:

e.g. single-family homes



- **one2clean one-tank system** (>> page 6)
- **Klaro E Professional one-tank system** (>> page 9)
- **Septic tank** (>> page 15)
- **Anaerobix** (>> page 15)

Wastewater solutions for:

e.g. villages, office buildings, campsites, hotels



- **one2clean two-tank system** (>> page 6)
- **Klaro E Professional multi-tank system** (>> page 9)
- **Large Biological Wastewater Treatment Plants** (>> page 14)

Wastewater solutions for:

e.g. holiday homes



- **Klaro E Professional** (>> page 9)
- **Anaerobix** (>> page 15)
- **Septic tanks** (>> page 15)

The Benefits of injection moulding systems

Plastic – clear advantages

Because of their low weight, plastic tanks can be installed without heavy equipment. This means that they can be easily transported and installed in locations that are difficult to access. Plastic tanks, have smooth inner surfaces that will not corrode.

Sustainability starts with production

GRAF products help to protect the environment, so it goes without saying that they are also manufactured in an environmentally friendly way. Injection-moulding a plastic part usually requires up to 2.7 kilowatt

hours of electricity per kilogram of plastic. GRAF needs just 0.38 to 0.5 kilowatt hours.

The injection moulding process therefore consumes up to **85% less energy** than normal.

The heat generated during manufacturing is processed by a modern heat recovery system and is used to heat the production and logistics buildings.

Durable products: reliable investment

Right from the product development stage, GRAF attaches great importance to durable design. Our decades of experience combined with modern production techniques guarantee that our plastic tanks last for over 50 years. GRAF offers a warranty of up to 25 years for its wastewater tanks. A 3-year warranty is offered for SBR technology, with an optional 6-year extended warranty. The efficiency of our wastewater treatment systems is regularly monitored by independent institutes. All products manufactured by GRAF are also 100% recyclable.

Benefits of the Carat system

The only wastewater underground tank of it's kind!

Unique manufacturing process

The GRAF Carat underground tank is unlike any other underground tank in the world. It is the largest tank of its kind to be manufactured by injection compression moulding. This technique provides the tank with unbeatable stability and ensures that each component is produced with the highest of accuracy.

Unlike other underground tanks, the wall thickness is equal in all areas of the tank. The production tolerances are kept to a minimum, resulting in a product of the highest quality, which is strong, accurate, reliable and extremely user friendly.

To manufacture the Carat range, one of the worlds largest injection moulding systems had to be developed.



The tank that turns its head for you

The GRAF Carat underground tank has a rotating tank dome. The tank dome can be aligned with the connections independently of the tank - this makes installation much easier! All installation pipes are connected using the five standard lip seals. The Carat telescopic dome shaft connects the system to the ground surface. The height of the tank can be smoothly adjusted to suit the local conditions and it can be tilted by 5°. The whole system is flush with ground level.



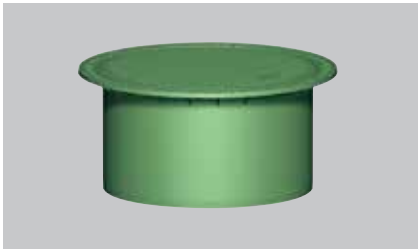
Flush with ground level

The Carat underground tank has numerous seals to efficiently stop dirt getting into the tank. This means that groundwater cannot get into the tank and, thus, dirt particles cannot contaminate the wastewater. The seals are in the intersection between the tank and the tank dome and between the tank dome and the telescopic dome shaft. All supply pipes connected to the tank dome are also sealed with five lip seals as standard.



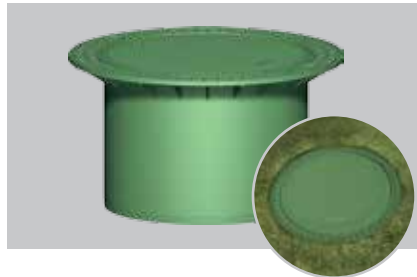
Ribbed tank base

The tank base of the Carat underground tank is extremely stable thanks to the numerous ribs. These enable the Carat to be installed in groundwater up to the middle of the tank. Furthermore, the stable base means the tank is very robust for transportation to site. The tank base has already proven its excellent rigidity in numerous computer simulations during the development process. Please follow our installation instructions for this purpose (can also be downloaded at www.grafuk.co.uk).



Telescopic dome shaft Mini

- With PE cover
 - Suitable for pedestrian loading
 - Weight 9kg
 - Adjustable earth covering across upper tank surface
- plus 140mm - 340mm earth covering
Order no. 371010



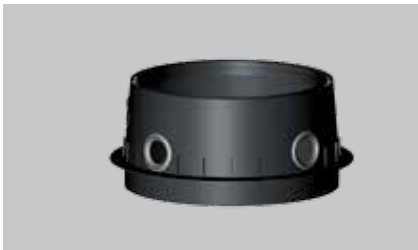
Telescopic dome shaft Maxi

- With PE cover
 - Suitable for pedestrian loading
 - Weight 15kg
 - Adjustable earth covering across upper tank surface
- plus 140mm - 440mm earth covering
Order no. 371011



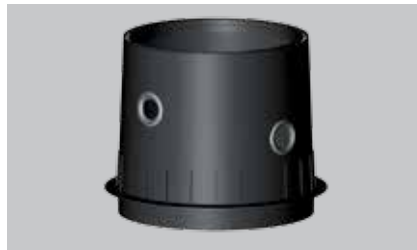
Telescopic dome shaft cast iron

- Suitable for pedestrian loading - with childproof cast iron cover up to 3.5t
 - Weight 55kg
 - Adjustable earth covering across upper tank surface
- plus 140mm - 440mm earth covering
Order no. 371020



Tank dome Mini

Order no. 371010



Tank dome Maxi

Order no. 371011



Tank dome Micro

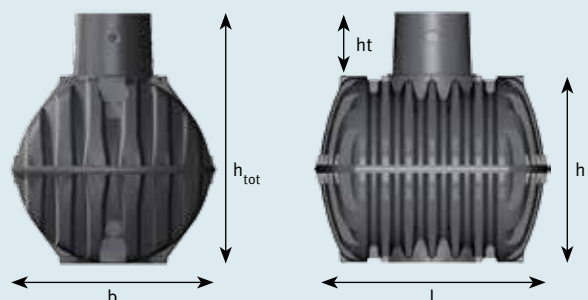
Order no. 371020

Dimensions

Volume [l]	Width b [mm]	Length l [mm]	Height h [mm]	Height htot [mm]	Height of tank dome ht [mm]	Inner Ø of tank dome [mm]	Weight [kg]	Order no.
2,700 (700 US gal.)	1565 (61.6")	2080 (81.9")	1400 (55.1")	2010 (79.1")	610 (24.0")	650-800 (25.6-31.5")	120 (265 lbs.)	372024
3,750 (1,000 US gal.)	1755 (69.1")	2280 (89.8")	1590 (62.6")	2200 (86.6")	610 (24.0")	650-800 (25.6-31.5")	150 (331 lbs.)	372025
4,800 (1,250 US gal.)	1985 (78.2")	2280 (89.8")	1820 (71.6")	2430 (95.7")	610 (24.0")	650-800 (25.6-31.5")	185 (408 lbs.)	372026
6,500 (1,700 US gal.)	2190 (86.2")	2390 (94.1")	2100 (82.7")	2710 (106.7")	610 (24.0")	650-800 (25.6-31.5")	220 (485 lbs.)	372027

Technical data

Max. earth covering (without groundwater vehicle loading)	1200 mm (47.2")
Max. vehicle weight	Suitable for vehicle loading (3.5 t) Higher loads on request
Earth covering required for vehicle loading	800 - 1200 mm (31.5 - 47.2")
Groundwater stability	up to middle of tank
Earth covering required for groundwater stability	800 - 1000 mm (31.5 - 39.4")
Connection	DN 100 / DN 150 / DN 200 on top



The one2clean system

The only wastewater underground tank of it's kind!

- ✓ Only one tank with just one chamber required
- ✓ Less energy consumption and less wear
- ✓ No mechanical elements in the wastewater
- ✓ No pumps in the wastewater
- ✓ No electrical components in the wastewater
- ✓ Incredibly low volume of sewage sludge



one2clean set-up kit

- Conventional wastewater treatment systems require up to three pumping processes. one2clean only requires one pumping process, which saves energy and extends the lifetime of the air compressor – the core part of the system
- Rugged clear water lifter manufactured in one seamless piece. No connectors or screws necessary
- Simple maintenance via an integrated, self-cleaning sampling container

one2clean system control

- The one2clean has a compact controller
- The microprocessor control system ensures simple operation and maintenance

Wastewater tank

- Telescopic cover
- State-of-the-art manufacturing for maximum stability
- Suitable for vehicle loading in conjunction with telescopic vehicle dome shaft
- 100% watertight and corrosion-resistant
- Can be installed in groundwater

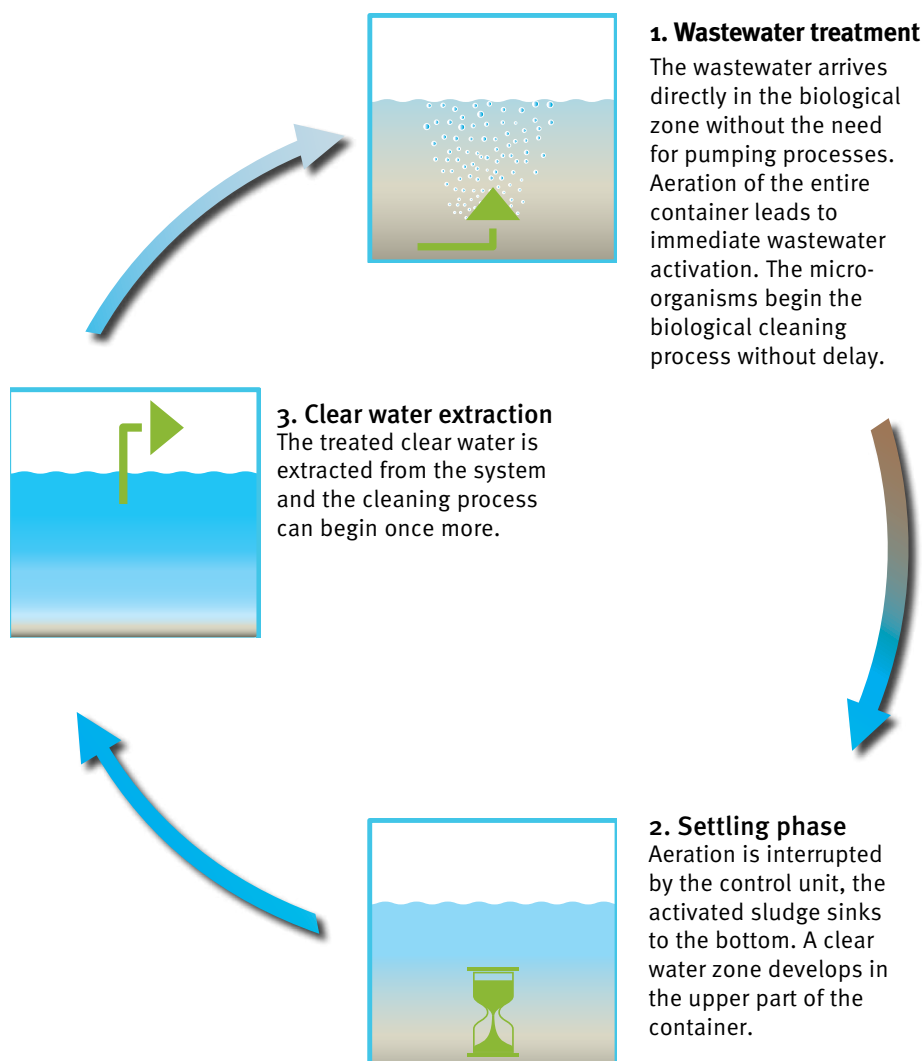
Technical data

System	one2clean
System conformity	EN 12566-3
Purifying technology	fully biological SBR lifting technology
One-tank systems available up to	9 inhabitants 1,350 l/d
Two-tank systems available up to	18 inhabitants 2,700 l/d
Maintenance interval	1 – 2 per year
Warranty for underground tank	15 years
Warranty for purifying technology	3 years
Cleaning performance	7, 14, 0.5
Control	
Holiday mode	Manual
+D Removal of nitrogen	●
+C Carbon infeed	○
Logbook function	●
Operation	4 keys
External control cabinet for installing control unit outdoors	○
Annual power consumption	230 kWh (5 inhabitants 750 l/d)

Parameter	%	mg/l
COD (chemical oxygen demand)	94,2 %	43
BOD ₅ (biochemical oxygen demand)	98,0 %	7
SS (suspended solids)	96,3 %	14
NH ₄ -N	98,3 %	0.5
N _{total}	87,0 %	7.9

Results of practical testing undertaken by the Prüfinstitut für Abwassertechnik (Testing Institute for Wastewater Technology), Aachen

- Standard equipment
- Available as options
- not available



Incredibly low volume of sewage sludge

- Aeration of the entire wastewater tank
- Immediate wastewater activation
- Minimisation of the sludge
- Less sludge removal
- Cost savings

Conventional wastewater treatment systems



one2clean



Minimum maintenance costs

- Simple construction
- High-quality components
- As much technology as necessary, as little technology as possible.
- Integrated sampling point

Minimum power consumption

- one2clean has only one pumping process, reducing energy consumption and running costs
- Economical motor valve
- Energy-optimised membrane compressor

one2clean only needs 3 steps to produce clear water

The wastewater treatment is carried out in one chamber in just one tank. This eliminates unnecessary pumping processes and sludge return.

one2clean is odourless

The entire volume of wastewater is immediately activated with oxygen using the unique one2clean technology. The final process of the one2clean produces an odourless, clear treated water for extraction to soakaway or waterway.

one2clean already meets the needs of tomorrow

one2clean achieves sustainable discharge values with an efficiency factor of up to 99%! This offers high investment security – even if legal requirements become stricter.

One-tank system

[Q Webcode G5104](#)

Inhabitants [max.]	Max. daily flow [l/d]	Max. organic load [kg BOD ₅ /d]	Total volume [l]	Volume [l]	Length [mm]	Width [mm]	Height [mm]	Weight [kg]
1–3	450	0.18	2,700	2,700	2080	1556	1690	120
4–5	750	0.3	3,750	3,750	2280	1755	1880	150
6–7	1,050	0.42	4,800	4,800	2280	1985	2110	185
8–9	1,350	0.54	6,500	6,500	2390	2190	2390	220

Two-tank system

[Q Webcode G5105](#)

Inhabitants [max.]	Max. daily flow [l/d]	Max. organic load [kg BOD ₅ /d]	Total volume [l]	Volume [l]	Length [mm]	Width [mm]	Height [mm]	Weight [kg]
1–7	1,050	0.42	5,400	2 x 2,700	4760	1556	1690	240
8–10	1,500	0.6	7,500	2 x 3,750	5160	1755	1880	300
11–14	2,100	0.84	9,600	2 x 4,800	5160	1985	2110	370
15–18	2,700	1.08	13,000	2 x 6,500	5380	2190	2390	440

one2clean Accessories

GRAF EPP control cabinet - Easy, flexible application

- Easy access for maintenance filter
- Function checking is simple as the control unit is located immediately next to the system
- Ideal solution for large distances from the house (>20m)
- Flexible use of the proven GRAF EPP control cabinet in a plastic external column (size upto 10 inhabitants)
- Lockable housing in sturdy, weather-resistant plastic
- Integrated double power socket for easy maintenance



GRAF Plastics external control cabinet for EP control cabinet (size upto 10 inhabitants)

Carbonator (Carbon dosage)

Sewage treatment plants require a constant inflow of wastewater into the tank in order for them to work correctly. The seasonal occupation of holiday homes is a challenge for wastewater treatment systems that rely on constant inflow to keep the microorganism population stable. Any destabilisation of the microorganisms within the system incurs extra operating costs.

The Carbonator was especially designed to keep wastewater treatment systems with seasonal inflow stable and working correctly. The additional Carbonator module automatically feeds the

systems with nutrients that keep the microorganisms alive when there is no wastewater inflow.

Benefits

- Regardless of system - suitable for other treatment plants (one2clean compatible)
- Individual adjustment of dosage
- Low power consumption
- Fast installation
- Simple operation



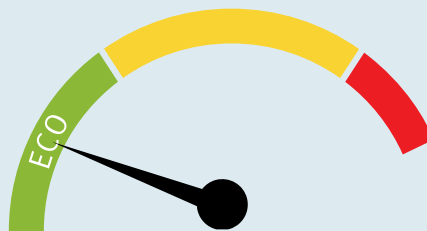
Empty pipe seal DN 100

- Air-tight seal for empty pipe
- No insulating foam required
- Clean, professional solution



Minimum power consumption

- one2clean has only one pumping process, reducing energy consumption and running costs
- Economical motor valve
- Energy-optimised membrane compressor



Only 46 kWh per person and per year!

The Klaro E Professional system

- ✓ No live electrical parts in the water
- ✓ Low power consumption
- ✓ Optional automatic adjustment to living situation (underload detection)
- ✓ Optional remote monitoring
- ✓ High-quality components mean low maintenance costs



The Klaro E Professional system

Super-quiet control cabinet

- Extremely low noise thanks to EPP housing and very quiet air compressor
- Battery-free power failure detection
- Very easy installation
- Interchangeable plug-in components

High-tech installation kit

- Integrated self-cleaning sampling container
- Each lifter manufactured as a single piece. No connectors or screws necessary
- Colour-coded and pre-assembled
- Special lifter design prevents sludge from leaking in
- Lifters easy to remove for maintenance without the use of tools

Wastewater tank

- Telescopic cover
- State-of-the-art manufacturing for maximum stability
- Suitable for vehicle loading in conjunction with telescopic vehicle dome shaft
- 100% watertight and corrosion-resistant
- Can be installed in groundwater

Technical data

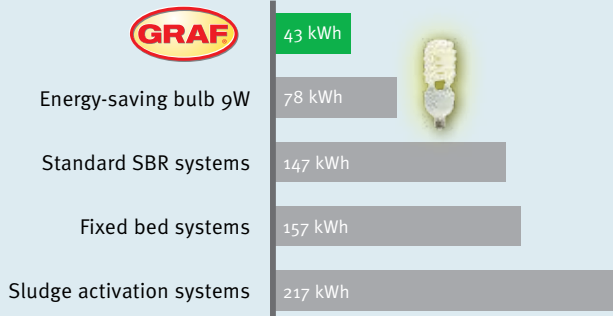
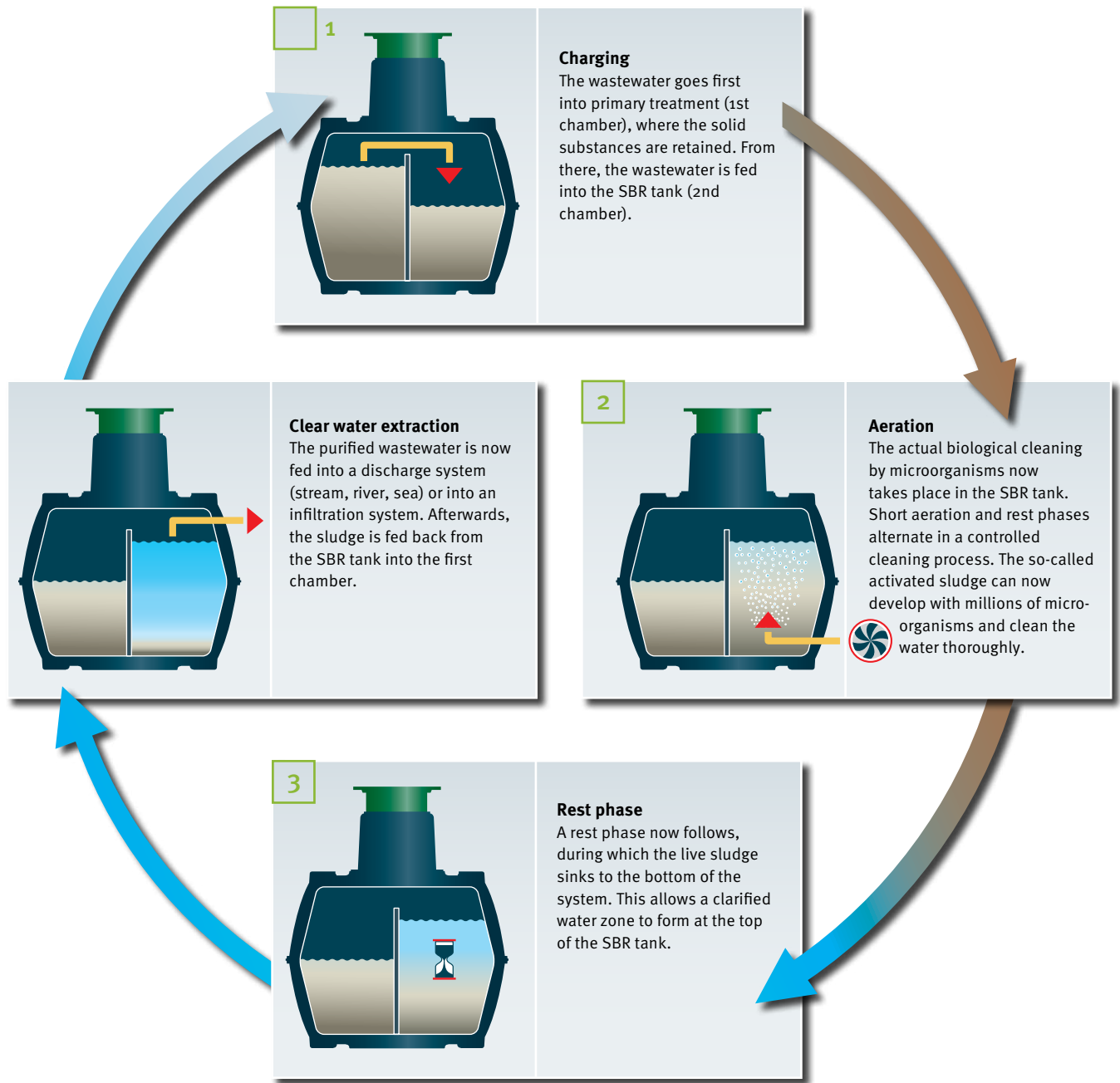
System	Klaro E Professional
System conformity	EN 12566-3
Purifying technology	fully biological SBR lifting technology
One-tank systems available up to	14 inhabitants 2,100 l/d
Maintenance interval	1 – 2 per year
Warranty for underground tank	15 years
Warranty for purifying technology	3 years
Cleaning performance	12, 20, 12
Control	KL24plus (+K)
Holiday / economy mode (underload detection)	Automatic
Back pressure monitoring	●
+R Remote transmission (GSM modem)	○
+P Phosphate removal	○
+C Carbon infeed	○
+H Hygiene package (Disinfection)	○
+D Removal of nitrogen	○
Control power failure recognition	●
Temperature sensor to protect against overheating	●
Logbook function	●
Operation	14 keys
Serial interface for software updates	●
External control cabinet for installing control unit outdoors	○

Parameter	Cleaning performance	
	%	mg/l
COD (chemical oxygen demand)	91.9%	51
BOD ₅ (biochemical oxygen demand)	95.9%	12
SS (suspended solids)	94.4%	20
NH ₄ -N	65.4%	12
N _{total}	57.1%	

Results of practical testing undertaken by the Prüfinstitut für Abwassertechnik (Testing Institute for Wastewater Technology), Aachen

- Standard equipment
- Available as options
- not available

Klaro E Professional



Minimal power consumption per inhabitant¹⁾

¹⁾The diagram indicates the annual power consumption of various wastewater treatment systems. Source: "wwt", edition 6/2007 "The wastewater treatment system as a permanent solution", page 15, table 3, practical data; Klaro E Professional: test report by PIA (Prüfinstitut für Abwassertechnik GmbH, Testing Institute for Wastewater Technology), Aachen, test number PIA2011-141B15



Klaro E Professional one-tank system

[Q Webcode G5101](#)

Inhabitants [max.]	Max. daily flow [l/d]	Max. organic load [kg BOD ₅ /d]	Total volume [l]	Volume [l]	Length [mm]	Width [mm]	Height [mm]	Weight [kg]
3-5	750	0.30	2,700	2,700	2080	1556	2010	140
5-8	1,200	0.48	3,750	3,750	2280	1755	2200	175
7-10	1,500	0.60	4,800	4,800	2280	1985	2430	220
9-14	2,100	0.84	6,500	6,500	2390	2190	2710	265

One complete system consists of: 1 Carat S underground tank with baffle, 1 tank dome, 1 telescopic dome shaft, Klaro E Professional system pack for one-tank system.

Klaro E Professional multitank system

[Q Webcode G5103](#)

Inhabitants [max.]	Max. daily flow [l/d]	Max. organic load [kg BOD ₅ /d]	Total volume [l]	Volume [l]	Length* [mm]	Width* [mm]	Height [mm]	Weight [kg]
7-10	1,500	0.60	5,400	2x2,700	2680	1565	2010	120
12-16	2,400	0.96	7,500	2x3,750	5160	1755	2200	150
16-22	3,300	1.32	9600	2x4,800	5160	1985	2430	185
20-28	4,200	1.68	13,000	2x6,500	5380	2190	2710	220
25-32	4,800	1.92	15,000	4x3,750	10700	2000	2200	300
32-44	6,600	2.64	19,200	4x4,800	11100	2200	2430	370
42-50	7,500	3.00	26,000	4x6,500	11100	2200	2710	440

One complete system consists of: Carat S underground tanks, tank domes, telescopic dome shafts, Klaro E Professional system pack for multitank system.

Klaro XL system – fully prefitted in the Carat XL underground tank

Inhabitants [max.]	Max. daily flow [l/d]	Max. organic load [kg BOD ₅ /d]	Total volume [l]	Volume [l]	Length* [m]	Width* [m]	Height [mm]	Weight [kg]
38	5,700	2.28	17,000	2x8,500	7500	2040	2695	760
46	6,900	2.76	20,000	2x10,000	7540	2240	2895	912

Scope of supply: Carat XL underground tanks with factory-prefitted technology and control cabinet for internal fitting. The air hoses from the underground tanks to the control panel are included. *Total measurements

Klaro E Professional Accessories

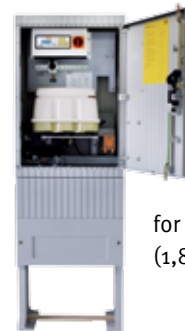


The image shows the external control cabinet for up to 10 inhabitants with LED warning light (standard on all external cabinets)

Plastic external control cabinet

for up to 10 inhabitants (up to 1,500 l/d)

Order no. 107773



for 10 – 28 inhabitants
(1,800 – 4,200 l/d)

Benefits

- Easy access for the maintenance fitter
- Function checking is simple as the control unit is located immediately next to the system
- Ideal solution for large distances from the house (> 20 m)
- Flexible use of the proven GRAF EPP control cabinet in a plastic external column (size up to 10 inhabitants)
- Lockable housing in sturdy, weather-resistant plastic
- Integrated double power socket for easy maintenance

Easy, flexible application for the GRAF EPP control cabinet



EPP control cabinet
Part of the wastewater treatment system



GRAF Plastics external control cabinet for EP control cabinet (size up to 10 inhabitants)



+K Convenience package

Convenience package: control with larger display and keypad. Underload detection by a pressure sensor in the control.

Standard

KL24plus



- SD card slot for easy logbook transfer
- Automatic underload detection
- Suitable for phosphate precipitation and UV module
- Large display and 14 keys for comfortable operation
- Automatic logging
- Battery-free power failure detection
- High-contrast display with blue backlighting
- Durable, gas-tight membrane keypad

+O Outlet with clear water pump

Lift the clear water when the outlet pipe is lower than the water course.

On request



+D Removal of nitrogen

The +D package for denitrification (removal of nitrogen) results in the clarified water quality satisfying very strict requirements. The GRAF systems thereby attain a N_{total} value (total parameters of inorganic nitrogen compounds) of less than 25 mg/l.

Order no. 107520

+P Phosphate removal package

Phosphate in water results in a massive build-up of algae. The GRAF +P package ensures the safe removal of phosphate and therefore great water quality

On request

+C Carbon infeed

Solution for weekend homes

The addition of carbon as a nutrient allows the purification process to continue and prevents the biology from dying off.

On request



+R Remote transmission

Remote monitoring allows error messages to be transmitted to mobile phones and operating data to be queried by text message. Convenient remote wastewater treatment system control by GSM is also possible.

- Greater efficiency
- Greater operating reliability
- Optimised service intervals
- Greater customer benefit thanks to monitoring service
- Low-cost remote diagnosis in the event of a fault without the service fitter having to come on site

Order no. 107117



+H Hygiene package

Disinfection using the +H package satisfies even the most stringent of purity requirements for a GRAF wastewater treatment system. Without the use of chemical substances, it reliably kills off germs and microorganisms. The clarified water therefore complies with the EU Bathing Water Directive.

On request

- Easy to operate
- Maintenance-friendly thanks to easy-to-remove module
- Fitted in downstream shaft



Accessories for small wastewater treatment systems

Sampling point, internal

For two- and multitank systems

Order no. 107170



Empty pipe seal DN 100

- Air-tight seal for empty pipe
- No insulating foam required
- Clean, professional solution

Order no. 107613

Convenient connection set

For external control cabinets up to 10 inhabitants. Air hoses (colour-coded) and DN 100 empty pipe seal

Order no. 107651

Voltage transformer

- From 110 V – 230 V
- Up to 300 W (LA 200)

Order no. 107421

Odour filter

For DN 100 ventilation openings; reliably filters out unpleasant odours; filter insert of multi-layer mesh with impregnated activated carbon

Order no. 104018

Filter insert

For odour filter; replace at least every two years or when odour is perceptible

Order no. 104024



Filling granulat for external cabinets

Prevents soil moisture from rising into the external control cabinet. Required amount: 1 bag per external control cabinet for 12 – 28 inhabitants; 50 l bag

Order no. 107607

SBR hose package

Includes: 1 x Ø 19 mm and 3 x Ø 13 mm PVC hose; colour-coded for Klaro system

Length: 5 m

Order no. 107189

Length: 10 m

Order no. 107190

Length: 15 m

Order no. 107191

Length: 20 m

Order no. 107192

Large Biological Wastewater Treatment Plants

up to 180 inhabitants for the Carat S, up to 200 inhabitants for the Carat XL or 250 inhabitants for the Carat XXL

Special requirements

Systems for more than 50 inhabitants work on the same principle as small wastewater treatment systems and use the SBR process. Because of the special requirements involved, all systems for more than 50 inhabitants are planned as individual projects. Our experienced team of engineers and technicians will help you to plan your project. We take all local circumstances into account from the concept planning phase to implementation.



Options



The proven options of the system Klaro E Professional are also available on request for large systems.



Klaro L system for the Carat underground tank

[Webcode G5106](#)

Inhab. [max.]	Max. daily flow [l/d]	Max. organic load [kg BOD ₅ /d]	Total number of tanks	Primary treatment [capacity in l]	SBR tank [capacity in l]	Required air hoses [quantity x Ø mm]	Length* [m]	Width* [m]
60	9,000	3.60	4	2 x 6,500	2 x 6,500	6 x 19	11.10	2.20
90	13,500	5.40	5	2 x 6,500	3 x 6,500	9 x 19	11.10	4.90
120	18,000	7.20	7	3 x 6,500	4 x 6,500	12 x 19	11.10	4.90
150	22,500	9.00	9	4 x 6,500	5 x 6,500	14 x 19	14.00	4.90
180	27,000	10.80	10	4 x 6,500	6 x 6,500	16 x 19	11.10	7.60

*Total measurements

Klaro XL system – fully prefitted in the Carat XL underground tank

[Webcode G5108](#)

Inhab. [max.]	Max. daily flow [l/d]	Max. organic load [kg BOD ₅ /d]	Total number of tanks	Primary treatment [capacity in l]	SBR tank [capacity in l]	Required air hoses [quantity x Ø mm]	Length* [m]	Width* [m]	Order no.
80	12,000	4.80	4	2 x 8,500	2 x 8,500	6 x 19	15.50	2.04	106172
100	15,000	6.00	4	2 x 10,000	2 x 10,000	6x19	15.58	2.24	106173
120	18,000	7.20	5	2x8,500	3x8,500	9x19	11.50	7.12	106174
145	21,750	8.70	5	2x10,000	3x10,000	9x19	11.56	7.72	106175
165	24,750	9.90	7	3x8,500	4x8,500	12x19	7.50	9.66	106176
200	30,000	12.00	7	3x10,000	4x10,000	12x19	7.54	10.46	106177

Scope of supply: Carat XL underground tanks with factory-prefitted technology and control cabinet for internal fitting. The air hoses from the underground tanks to the control panel are included. *Total measurements

Klaro XXL system – fully prefitted in the Carat XXL underground tank

[Webcode G5109](#)

Inhab. [max.]	Max. daily flow [l/d]	Max. organic load [kg BOD ₅ /d]	Total number of tanks	Primary treatment [capacity in l]	SBR tank [capacity in l]	Required air hoses [quantity x Ø mm]	Length* [m]	Width* [m]	Order no.
75	15,000	6.00	2	1x16,000	1x16,000	6x19	15.50	2.04	107757
125	24,750	9.90	2	1x26,000	1x26,000	6x19	15.58	2.24	107758
150	30,000	12.00	4	2x16,000	2x16,000	9x19	11.50	7.12	107759
250	45,000	18.00	4	2x26,000	2x26,000	9x19	11.56	7.72	107760

Scope of supply: Carat XXL underground tanks with factory-prefitted technology and control cabinet for internal fitting. The air hoses from the underground tanks to the control panel are included. *Total measurements

External control cabinets



L metal external cabinet



XL metal external cabinet



Concrete external cabinet

To plan your system, we need the following information:

- What type of project? (Domestic, hotel, commercial etc.)
- How many people will use the system and what is the water consumption per head?
- What legal requirements apply to wastewater at the location?
- Local power grid

Carat Septic Tank

Two chambers

Floating and removable material is extracted from domestic wastewater in mechanical wastewater tanks. This is purely mechanical cleaning.

Benefits

- Low weight: can also be installed in difficult local conditions without a crane
- Low maintenance: maintenance or cleaning work can be performed through the shafts
- Tanks can be used as rainwater harvesting systems after thorough cleaning

12566-1*

Hydraulic efficiency **99.9%**

*Refer to the installation instructions for CE-compliant Septic tanks



Carat S Septic tank

[Q Webcode G5501](#)

Inhabitants [max]	Total volume [l]	Capacity [l]	Length [mm]	Width [mm]	Height [mm]	Weight [kg]
4	2,700	2,700	2080	1565	2010	145
11	3,750	3,750	2280	1755	2200	175
18	4,800	4,800	2280	1985	2430	220
30	6,500	6,500	2390	2190	2710	260

One complete system consists of: Carat S underground tank with baffle. Also available without baffle as a one-chamber wastewater tank.

Anaerobix – Wastewater Treatment System with Biological Filter

Simple and low-cost

- Anaerobix is the new low-cost anaerobic filter system for wastewater tanks in Graf tanks
- Filled with the carrier material supplied, it increases the cleaning performance of a wastewater tank several times over. The large surface of the recyclable plastic carrier material (141 m²/m³) allows the biofilm responsible for the cleaning process to cover a large area.

The benefits of the Anaerobix system at a glance

- Very good cleaning performance: efficiency over 90%, PIA-certified (Testing Institute for Waste Water Technology)
- No power consumed, no electrical or mechanical components (e.g. pumps or float switch) in tank
- Largely maintenance-free
- Installation in proven Graf tanks
- Easy to install with standard DN 100 pipes
- Very good value for money



Technical data

System	Anaerobix
Purifying technology	Anaerobic system
One-tank systems available up to	3,750 l/d
Maintenance interval	1 – 2 per year
Warranty for underground tank	15 years

Anaerobix single-tank system

[Q Webcode G5503](#)

Tank volume	2,700 litres	3,750 litres	4,800 litres	6,500 litres
Max. daily flow [l]	1,200	2,250	2,850	3,750



Limit values

BOD ₅ (biochemical oxygen demand)	75 %
SS (suspended solids)	90 %



Warranty clause:

The warranty mentioned in this brochure only refers to the tank in question and not to the accessories. Within the warranty period we grant free replacement of the material. Further benefits are excluded. Pre-condition for warranty benefits are proper handling, assembly and installation according to the mounting guidelines.

N.B. Protect tanks from frost when installed above ground! In case of groundwater installation, please contact us for further information prior to purchase!

For all indications of measurements in this brochure we reserve a tolerance of +/- 3%. The usage volume of the tanks may be up to 10% lower than the tank Volume, depending on the connecting option.

Technical modifications and further development of the various products are subject to change. Errors excepted.

RAINWATER HARVESTING



INFILTRATION



WASTEWATER TREATMENT SOLUTIONS



MULTIPURPOSE CONTAINERS



Graf UK Ltd
Target House
Thorpe Way Industrial Estate
Banbury
Oxfordshire OX16 4SP

T: 01608 661500
F: 01295 211333
E: info@grafuk.co.uk
www.grafuk.co.uk

Graf UK Ltd (Scotland)
220 Blairtummock Road
Queenslie Industrial Estate
Glasgow
G33 4ED

T: 0141 465 1540
F: 01295 211333
E: info@grafuk.co.uk
www.grafuk.co.uk

Graf Ireland
Milltown Business Park
Milltown
Co. Galway

T: +353 93 51765
F: +44 1295 211333
E: info@grafireland.ie
www.grafireland.ie

Your expert specialist dealer: