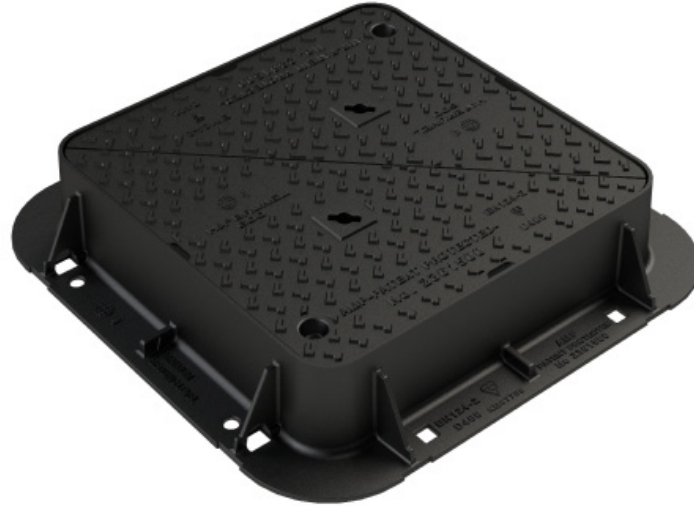




# HA<sup>2</sup> BRUNEL 600 HL1 Technical Sheet



## Material

EN GJS 500-7 Iron  
ISO 1083 / EN1563

**HA<sup>2</sup> BRUNEL** is a range of Highway access covers and frames. The HA<sup>2</sup> BRUNEL range has been designed to BS EN 124-2:2015, CD534 and BS 7903. The covers have undergone extensive trialling and testing including a 3 months road trial in which they were subjected to 3000 vehicles a day at an average speed of 80 Kmh. The HA<sup>2</sup> BRUNEL range is compliant with RSTA ADEPT Code of practice for Ironwork systems Installation and Refurbishment.

Code	Clear Opening (mm)	O/all Frame (mm)	Frame Depth (mm)	EN 124	Description	Weight (kg)	PSRV
BRUNEL 600 HL1	600 x 600	786 x 786	150	D 400	Ductile Iron, D. Tri Lids Cover & Frame.	87	82

## Features

The HA<sup>2</sup> BRUNEL range includes new and innovative features designed to maximise performance in the most demanding environments including:

- CD534 Compliant (Formerly HA104/09.)
- BS 7903 Compliant.
- EN 124:2: 2015 Load Class D 400.
- BSI Kitemark.
- Minimum Mortar Line Indicator.
- AMP™ patented anti-movement technology frames.
- Unique V-Seating to increase bearing area & limit lateral movement.
- Anti-Dislodge Keyways for safe operation.
- Optional - Safety Grids, Sealing Plates, Badging
- Innovative Frame Levelling System.



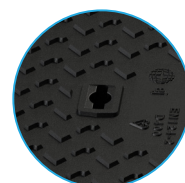
V-Seating



Patented '4L'  
Anti-slip Pattern



Minimum Mortar  
Line Indicator



Anti-Dislodge  
Keyways



Cover Locking  
Point