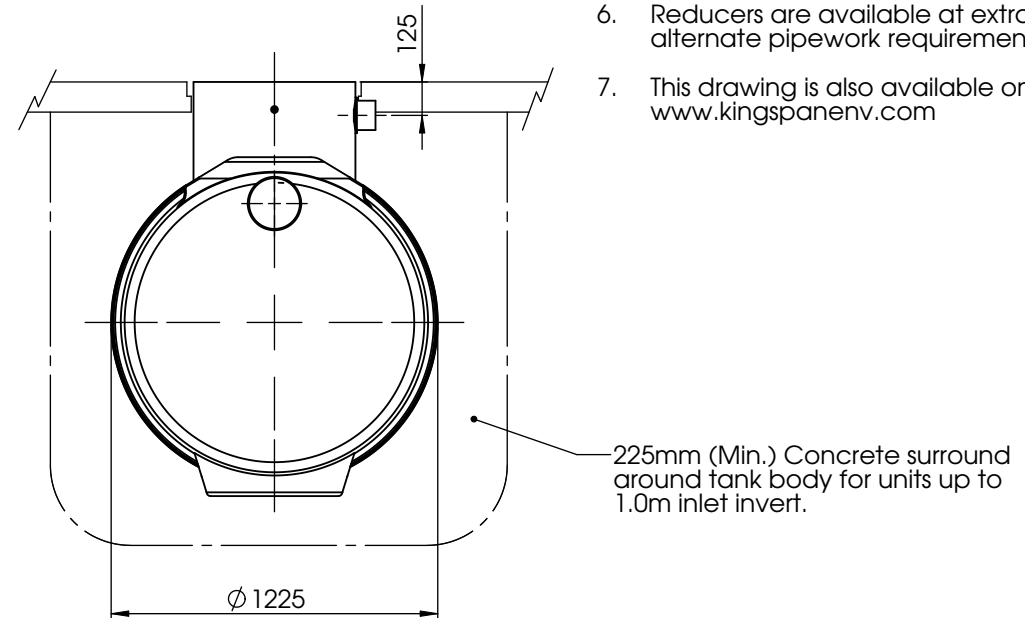
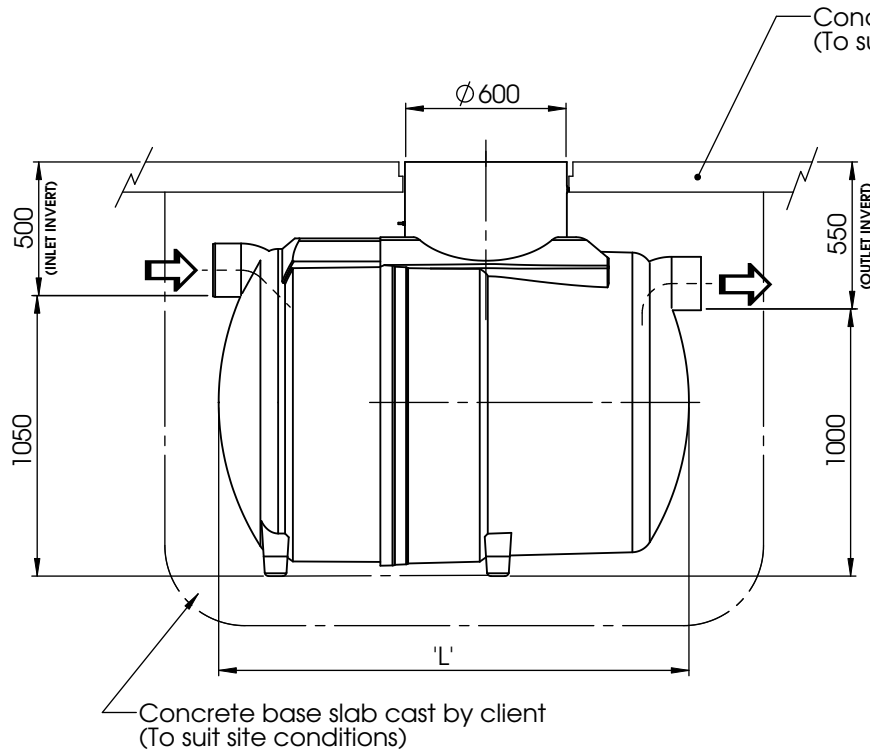


UNIT REF. No.	NOMINAL FLOW	DIM 'L' (mm)	APPROX EMPTY WEIGHT (kg)	FALL ACROSS UNIT
NSFA010	10 L/s	2610	130	50
NSFA015	15 L/s	3910	167	50

Notes:-

1. Inlet/outlet pipes are plain pipe Ø200mm PVCu. The standard EN858 states minimum connection sizes, units ordered with different sized connections are not fully compliant with the standard.
2. Please note, a Class 1 separator includes coalescer media.
3. Extension necks for deeper inverts can be provided in 0.5m increments for on site assembly. Max 2.0m invert recommended. Please ask our sales department for further details.
4. All units require appropriate cover and frame to suit applied loadings.
5. This drawing should be used for dimensional information only. It is essential that this drawing is read in conjunction with installation guidelines supplied with the unit. (Copies are available from our sales dept.).
6. Reducers are available at extra cost to suit alternate pipework requirements.
7. This drawing is also available on our website www.kingspanenv.com



Please check with Environmental Treatment Systems Ltd that this drawing is the latest issue			
Issue	Date	Drawn by	Description
02	18.08.09	P.T.C	CC712
01	09.05.07	T.Kelly	CC465 Initial Issue

Material : n/a	Tolerance (unless stated) : n/a
Finish : n/a	Thickness : n/a
Weight : n/a	Surface Area : n/a

Drawing : DS0848P Page 1 of 1
 NSFA010-NSFA015 Full Retention Separators

All dimensions in mm

Scale: Not to scale

Kingspan reserve the right to alter the details of this drawing without prior notice. This drawing is copyright and may not be reproduced or used without the written permission of Kingspan

