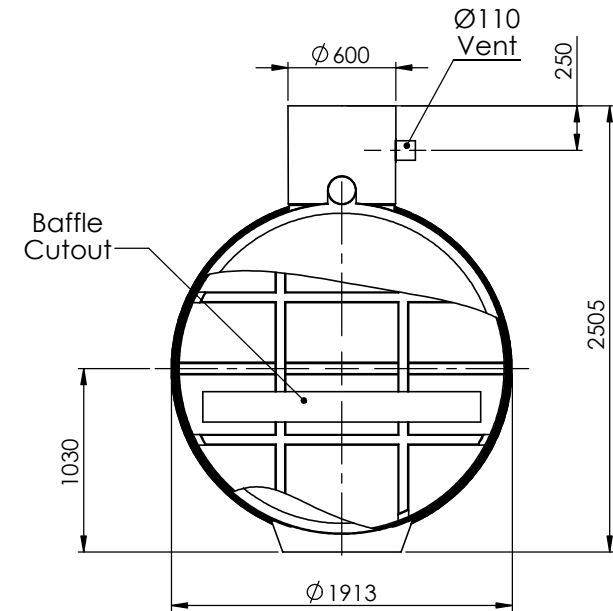


- Notes: -
1. Units Can Be Provided With Extension Shafts In 0.5m Increments.
 2. Standard Inlet/ Outlet Pipes Are PVCu Underground Drainage To BS5481, Other Pipe Sizes And Types Available.
 3. It Is Essential That This Drawing Is Read In Conjunction With The Manual (Supplied With The Unit) Giving Installation Details. This Drawing Should Be Used For Dimensional Information Only.



Unit	Working Capacity	DIM 'A'	DIM 'B'	DIM 'C'	Inlet/ Outlet STD. Size	Approx Weight (kg)		Fall Across Unit
						Empty	Full	
W2/ 080	8000L	3230	900	1430	250	468	8468	50
W2/ 100	10000L	3960		2160	250	518	10518	50
W2/ 120	12000L	4755		2955	300	564	12564	50

Please Check with Kingspan Environmental For The Latest Issue Of This Drawing				Material : Various	Tolerance (unless stated) : n/a	Drawing : DS0853P	Page 1 of 1
Issue	Date	Drawn by	Approved by	Finish : n/a	Thickness : n/a		
02	30/10/14	L.Steward		Weight : n/a	Surface Area : n/a m ²		
Description				Modelled By :	W2/080 - W2/120 Washdown & Silt Separators (2 Stage)		
All Dimensions In mm		Scale: Do Not Scale		 Third Angle Projection		Kingspan Environmental reserve the right to alter the details of this drawing without prior notice. This drawing is copyright and may not be reproduced or used without the written permission of Kingspan Environmental	
R:\Drawing Data\02 - Sales Drawings\DS\DS - 08\DS0853P W2 080 - W2 120 Washdown & Silt Separators (2 Stage)							

